

# Big Walnut Local School District

---

---

## Monthly Financial Report

*for the month ended*  
**June 30, 2022**

---

---



Prepared By:  
Jeremy J. Buskirk  
Treasurer



## **Table of Contents**

<b><u>Description</u></b>	<b><u>Page</u></b>
Pie Chart of Estimated Revenue and Expenditures for fiscal years 2021-22 and 2011-12	1
Comparison of Fiscal Year 2022 YTD Estimated Revenue and Expenditures with Fiscal Year 2022 YTD Actuals	2

## **Variance Analysis**

Comparison of Monthly Ending Cash Balances	4 & 5
Comparison of Monthly and Total Revenues & Other Financing Sources	6 & 7
Comparison of Monthly and Total General Property Tax (Real Estate)	8 & 9
Comparison of Monthly and Total Tangible Personal Property Tax (PUPP)	10 & 11
Comparison of Monthly and Total Income Tax	12 & 13
Comparison of Monthly and Total State Grants-in-Aid (Unrestricted & Restricted)	14 & 15
Comparison of Monthly and Total State Property Tax Allocations	16 & 17
Comparison of Monthly and Total Other Revenues & Other Financing Sources	18 & 19
Comparison of Monthly and Total Expenditures & Other Financing Uses	20 & 21
Comparison of Monthly and Total Personal Services (Salaries & Wages)	22 & 23
Comparison of Monthly and Total Employees' Retirement/Insurance Benefits	24 & 25
Comparison of Monthly and Total Purchased Services	26 & 27
Comparison of Monthly and Total Supplies and Materials	28 & 29
Comparison of Monthly and Total Capital Outlay	30 & 31
Comparison of Monthly and Total Other Expenditure Objects & Other Financing Uses	32 & 33

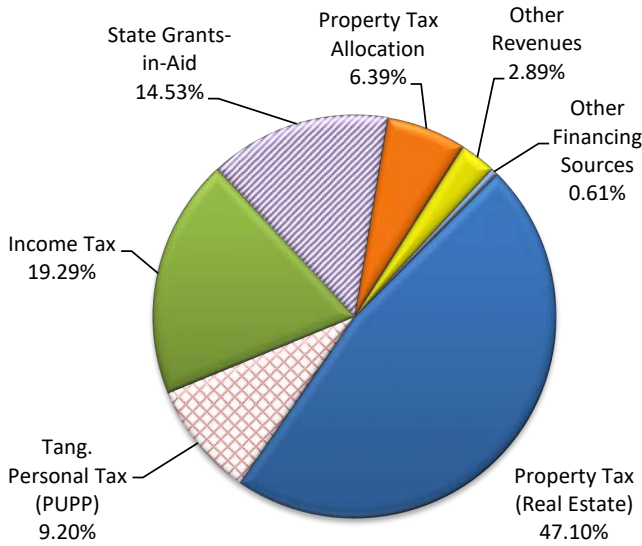
## **All Funds Reports**

Receipts, Expenditures and Fund Balances All Funds (Fund Report)	35
Summary Check Register (Disbursement Report)	36 - 44
Comparison of Fiscal Year 2022 YTD Appropriations with Fiscal YTD Actual Expenditures – All Funds (excluding General Fund)	47
Investments - All Funds	48 - 50

**Page Intentionally Left Blank**

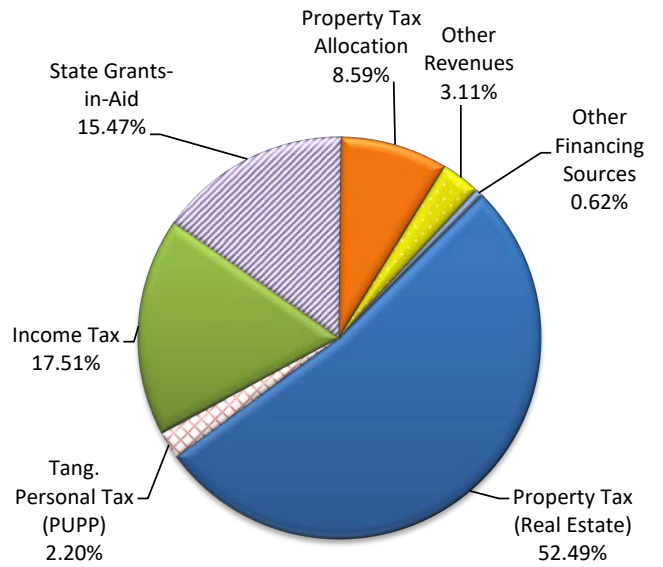
**EST. GENERAL FUND REVENUE FY22**

**\$48,049,946**



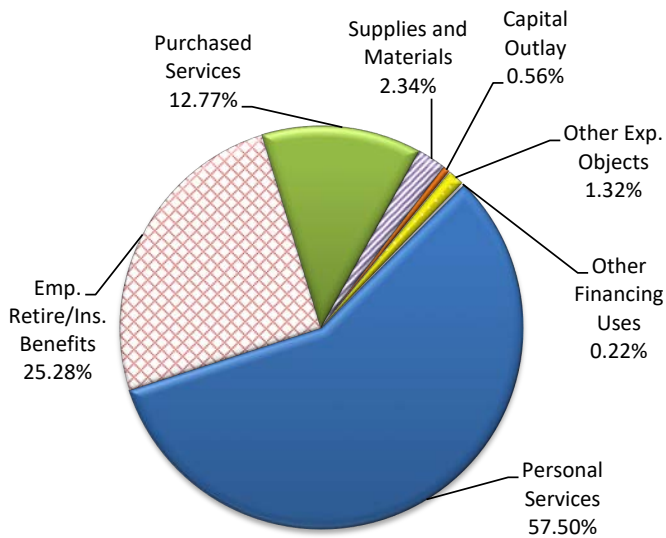
**EST. GENERAL FUND REVENUE FY12**

**\$29,886,132**



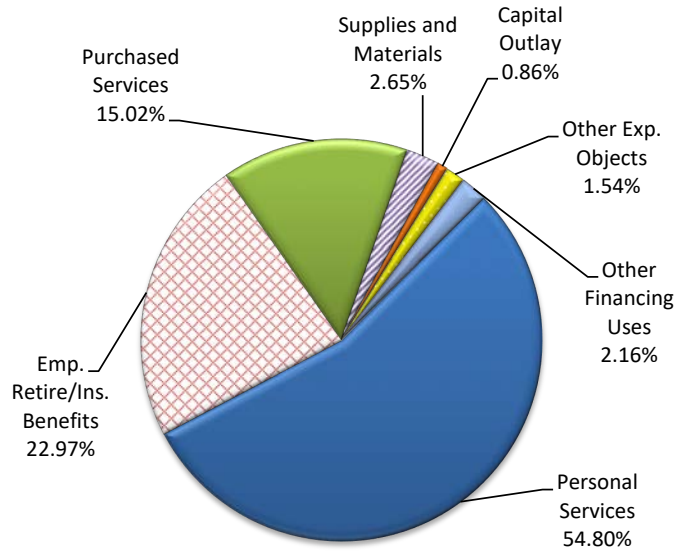
**EST. GENERAL FUND EXPENDITURES FY22**

**\$45,395,038**



**EST. GENERAL FUND EXPENDITURES FY12**

**\$26,966,126**



**Note:** There were significant cuts made for FY11 due to budget constraints and a levy failure in the previous fiscal year. Some costs staffing and costs were returned for FY12.

	<b>FY 2022</b>	<b>FY 2012</b>	<b>% Change</b>
<b>Enrollment</b>	4,261 as of 5/26/2022	2,994	42.32%

**COMPARISON OF FISCAL YEAR 2022 YEAR-TO-DATE ESTIMATED REVENUES AND  
EXPENDITURES WITH FISCAL YEAR 2022 YEAR-TO-DATE ACTUALS  
GENERAL & REQUIRED DEBT SERVICE FUNDS ONLY**

<b>CATEGORY</b>	<b>FY 22 EST.</b>	<b>FY 22 ACTUAL</b>	<b>VARIANCE</b>	<b>PERCENTAGE</b>
<b>Revenues</b>				
General Property Tax (Real Estate)	\$22,630,628	\$22,993,047	\$362,419	1.6%
Tangible Personal Property (PUPP)	4,419,541	4,496,663	77,122	1.7%
Income Tax	9,269,915	9,983,767	713,852	7.7%
Unrestricted State Grants-in-Aid	6,596,743	6,352,343	(244,400)	-3.7%
Restricted State Grants-in-Aid	384,571	780,366	395,795	102.9%
Property Tax Allocation (Reimb.)	3,070,499	3,084,552	14,053	0.5%
All Other Revenues	1,386,703	1,835,016	448,313	32.3%
<b>Total Revenues</b>	<b>47,758,600</b>	<b>49,525,754</b>	<b>1,767,154</b>	<b>3.7%</b>
<b>Other Financing Sources</b>				
Advances-In	\$278,000	\$278,000	\$0	0.0%
All Other Financing Sources	13,346	196,576	183,230	1372.9%
<b>Total Other Financing Sources</b>	<b>291,346</b>	<b>474,576</b>	<b>183,230</b>	<b>62.9%</b>
<b>Total Revenues &amp; Other Fin. Sources</b>	<b>\$48,049,946</b>	<b>\$50,000,330</b>	<b>\$1,950,384</b>	<b>4.1%</b>
<b>Expenditures</b>				
Personal Services (Salaries & Wages)	\$26,102,302	\$25,761,961	(\$340,341)	-1.3%
Retirement/Insurance Benefits	11,477,008	10,995,215	(481,793)	-4.2%
Purchased Services	5,797,074	5,992,864	195,790	3.4%
Supplies and Materials	1,063,249	1,150,900	87,651	8.2%
Capital Outlay	255,000	15,090	(239,910)	-94.1%
Other Expenditure Objects	600,406	638,409	38,003	6.3%
<b>Total Expenditures</b>	<b>45,295,039</b>	<b>44,554,438</b>	<b>(740,601)</b>	<b>-1.6%</b>
<b>Other Financing Uses</b>				
Operating Transfers-Out	\$100,000	\$0	(\$100,000)	-100.0%
Advances-Out	0	0	0	0.0%
All Other Financing Uses	0	0	0	0.0%
<b>Total Other Financing Uses</b>	<b>\$100,000</b>	<b>\$0</b>	<b>(\$100,000)</b>	<b>-100.0%</b>
<b>Total Expenditures &amp; Other Fin. Uses</b>	<b>\$45,395,039</b>	<b>\$44,554,438</b>	<b>(\$840,601)</b>	<b>-1.9%</b>
Excess of Revenues & Other Fin. Sources over (under) Expenditures & Other Fin. Uses	\$2,654,907	\$5,445,892	\$2,790,985	105.1%
<b>Beginning Cash Balance July 1</b>	<b>\$13,412,581</b>	<b>\$13,412,581</b>	<b>\$0</b>	<b>0.0%</b>
<b>Ending Cash Balance</b>	<b>\$16,067,488</b>	<b>\$18,858,472</b>	<b>\$2,790,985</b>	<b>17.4%</b>
Estimated Encumbrances	\$785,931	\$675,718	\$110,213	
<b>Unreserved Fund Balance</b>	<b>\$15,281,557</b>	<b>\$18,182,755</b>	<b>\$2,901,198</b>	



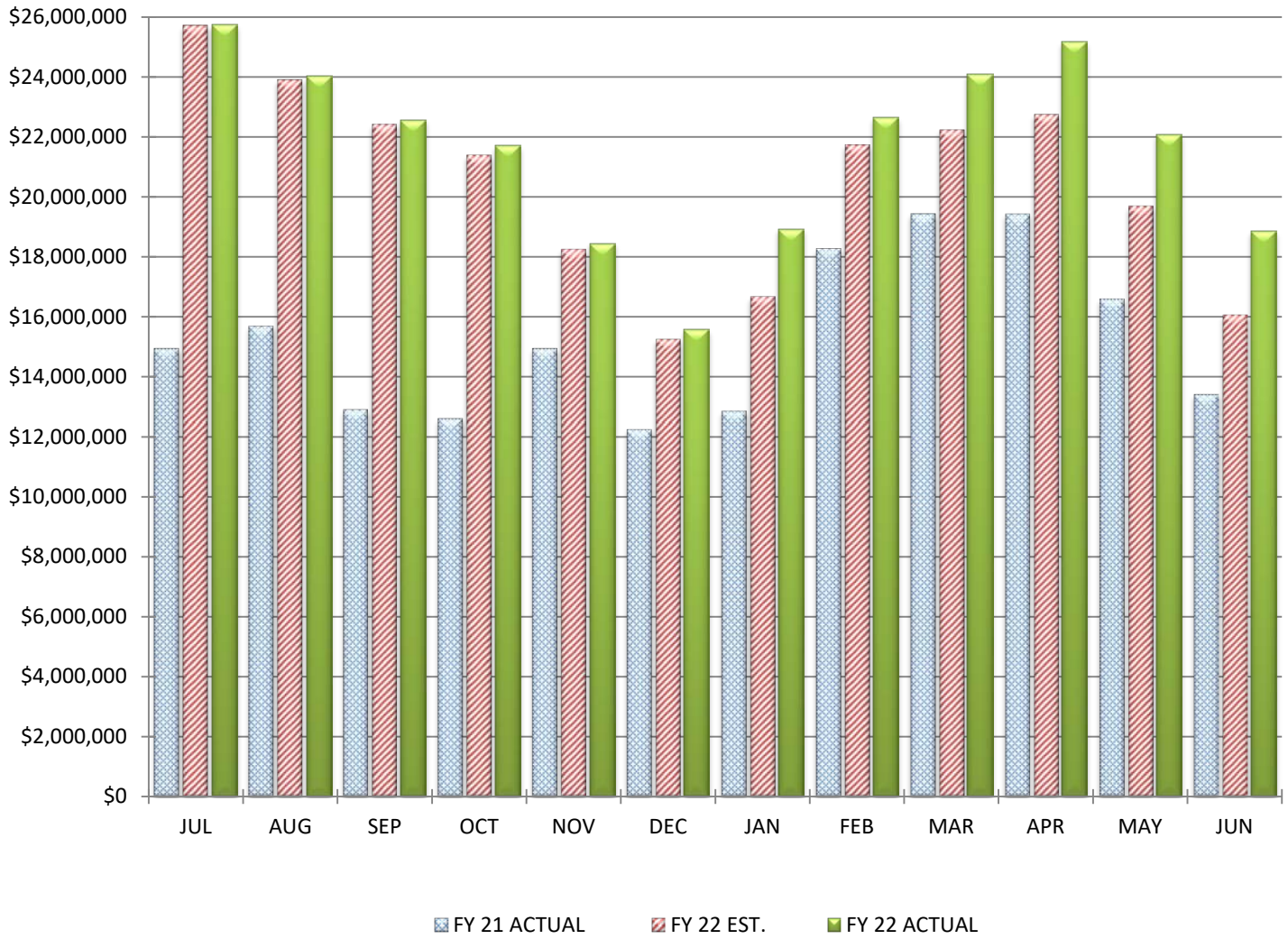
BIG WALNUT | INSPIRE  
LOCAL SCHOOLS | & GUIDE

---

VARIANCE ANALYSIS - GENERAL FUND

---

# COMPARISON OF MONTHLY ENDING CASH BALANCES





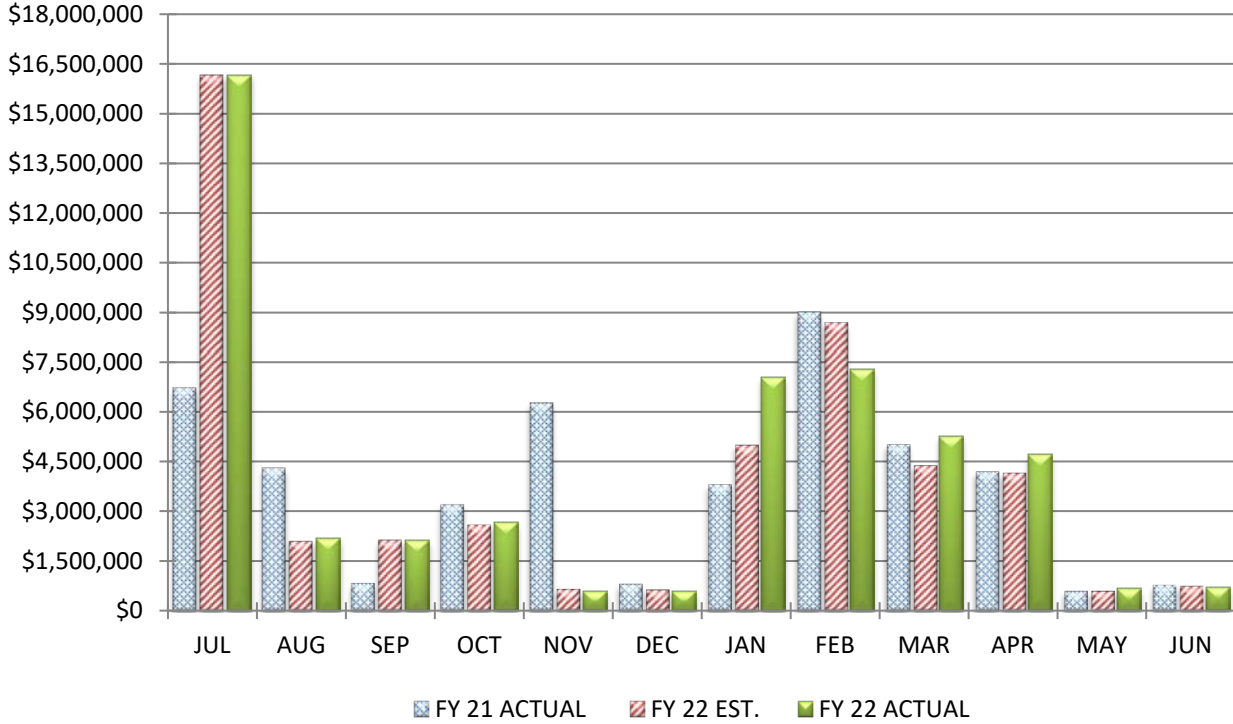
## COMPARISON OF MONTHLY ENDING CASH BALANCES

June 30, 2022

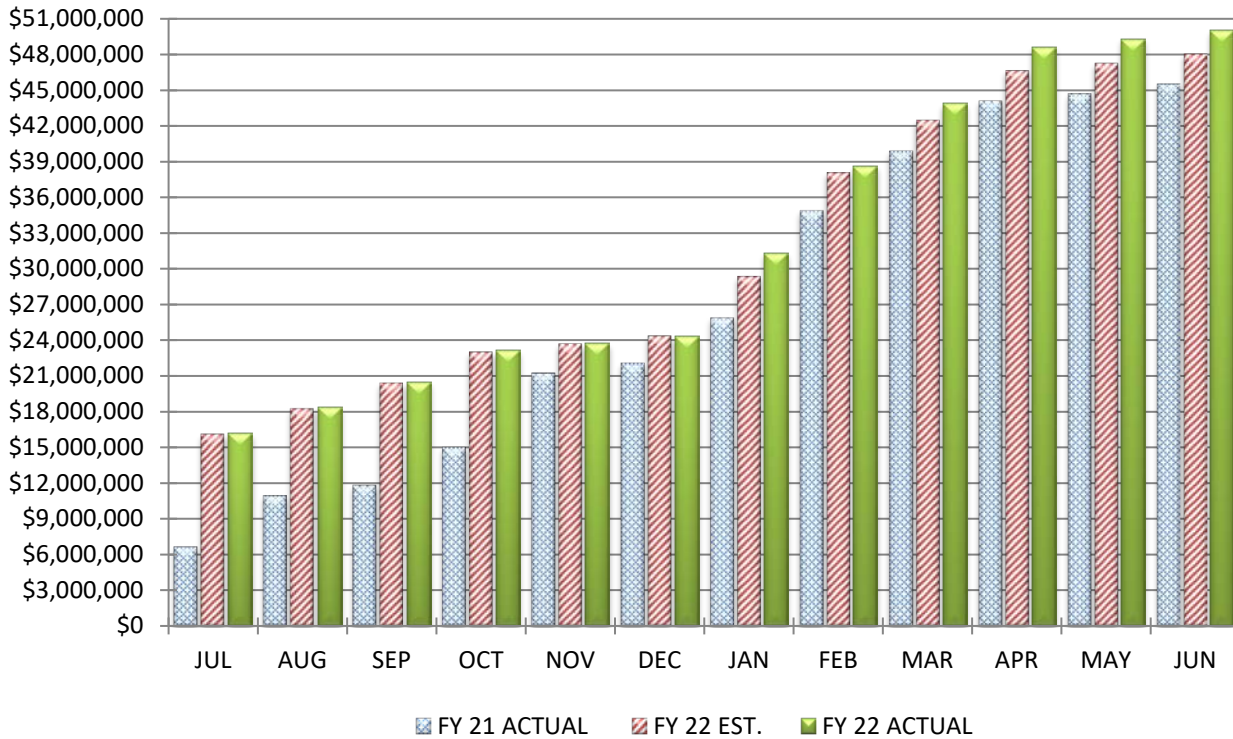
Actual Cash Balance		\$18,858,472
Estimated Cash Balance		\$16,067,488
Variance From Estimate	OVER	\$2,790,985
Percent Variance From Estimate	OVER	17.37%
Previous Year Cash Balance		\$13,412,581

**COMMENTS:** Our June balance is above our estimate and have end the fiscal year better than anticipated. We saw strong growth in our Income Tax as we continue to recover from COVID-19, and we continued to see growth in our property taxes. Overall, we are ending the fiscal year under our original estimates, which further helps our overall cash balance. Additional details will be provided in subsequent sections.

## COMPARISON OF TOTAL MONTHLY REVENUES & OTHER FINANCING SOURCES



## COMPARISON OF TOTAL YEAR-TO-DATE REVENUES & OTHER FINANCING SOURCES

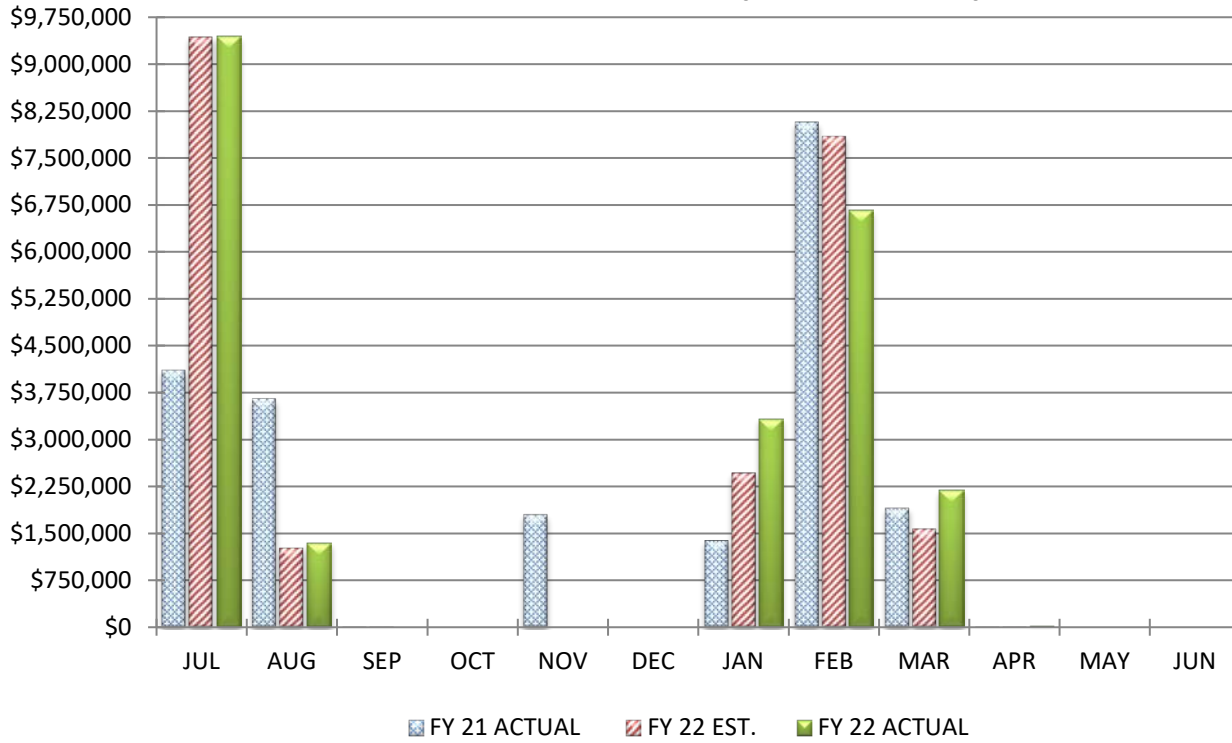


**COMPARISON TOTAL REVENUES & OTHER FINANCING SOURCES**

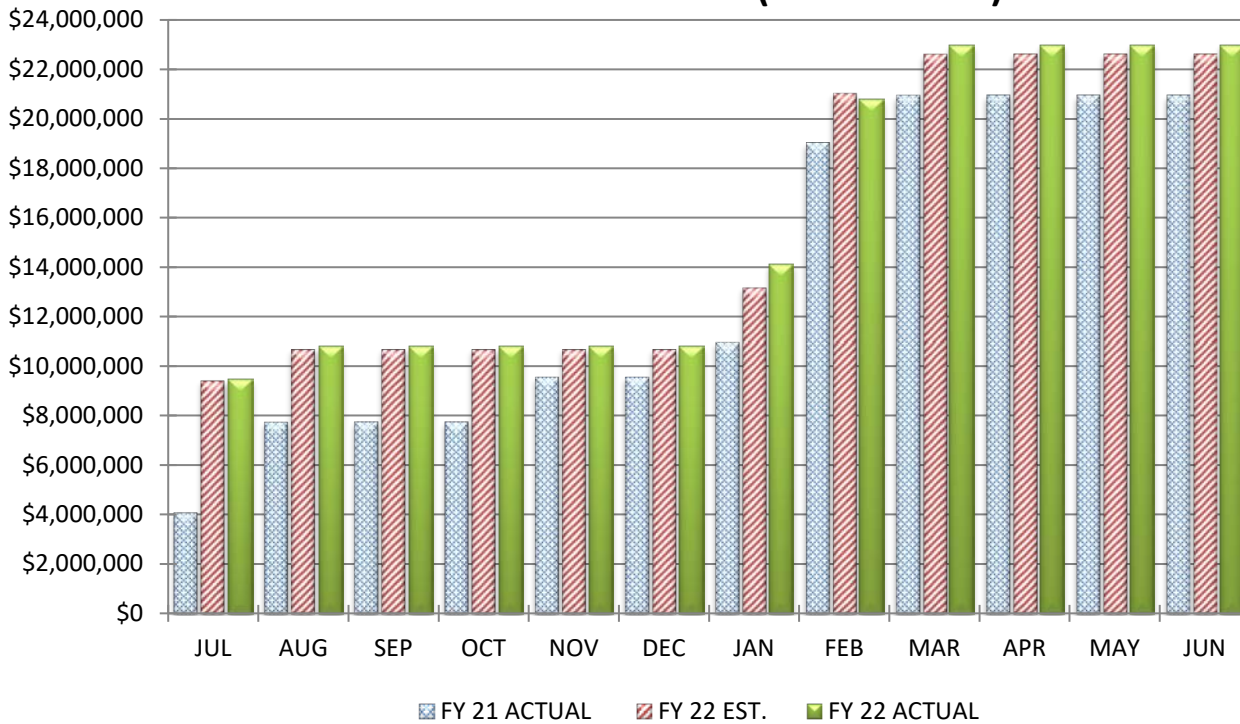
		<b>June 30, 2022</b>		
		<u>MONTH</u>		<u>YEAR-TO-DATE</u>
Actual Receipts		\$705,069		\$50,000,330
Estimated Receipts		\$762,481		\$48,049,946
Variance From Estimate	UNDER	(\$57,412)	OVER	\$1,950,384
Variance From Estimate	UNDER	-7.53%	OVER	4.06%
Actual Prior Year		\$791,143		\$45,542,180
Total 2021-2022 Estimate				\$48,049,946
Percent Of Total Estimate Received				104.06%
Percent Of Budget Year Completed		12 Months		100.00%

**COMMENTS:** We ended the fiscal year with a positive variance. We are pleased that almost all revenue areas came in ahead of estimates at the end of the fiscal year. The new state school funding formula created additional classifications that are required to be posted as restricted revenues in our accounting system that had previously been included as part of our unrestricted revenues, which accounts for this deficit. Together our restricted and unrestricted grants-in-aid came in on track with our original estimates for State revenues. Additional analysis will be provide with each individual section.

## COMPARISON OF TOTAL MONTHLY GENERAL PROPERTY TAX (REAL ESTATE)



## COMPARISON OF TOTAL YEAR-TO-DATE GENERAL PROPERTY TAX (REAL ESTATE)

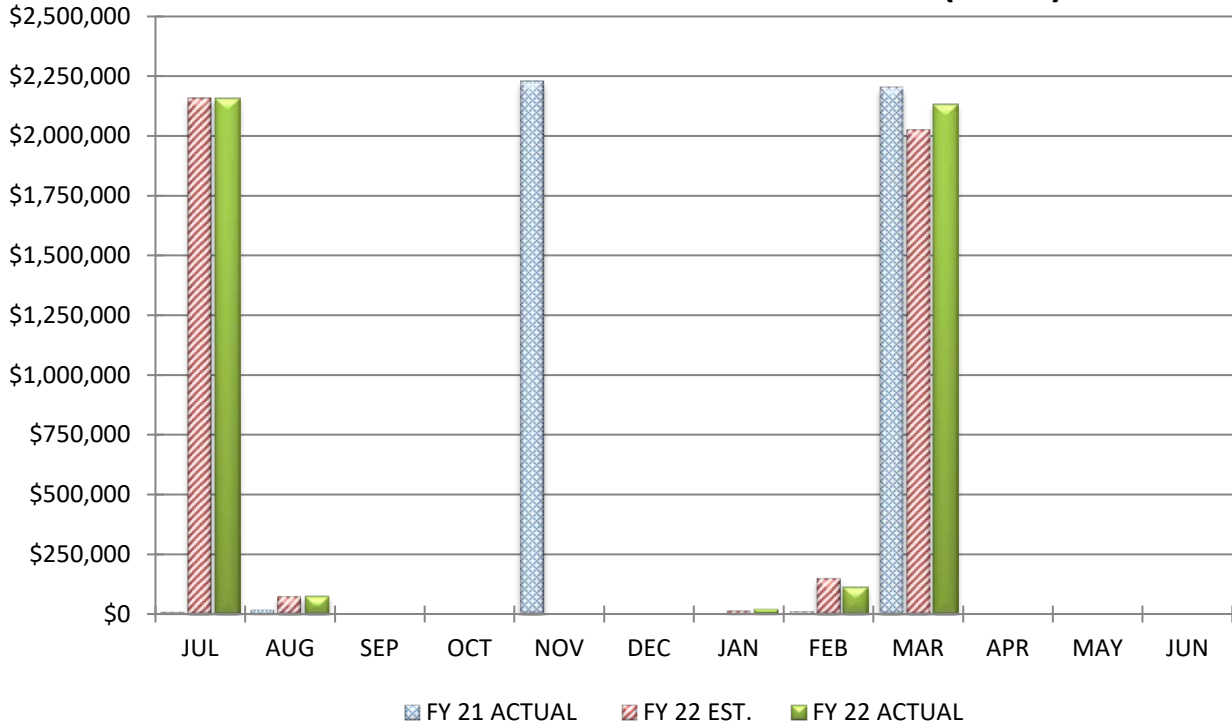


**COMPARISON OF GENERAL PROPERTY TAX (REAL ESTATE)**

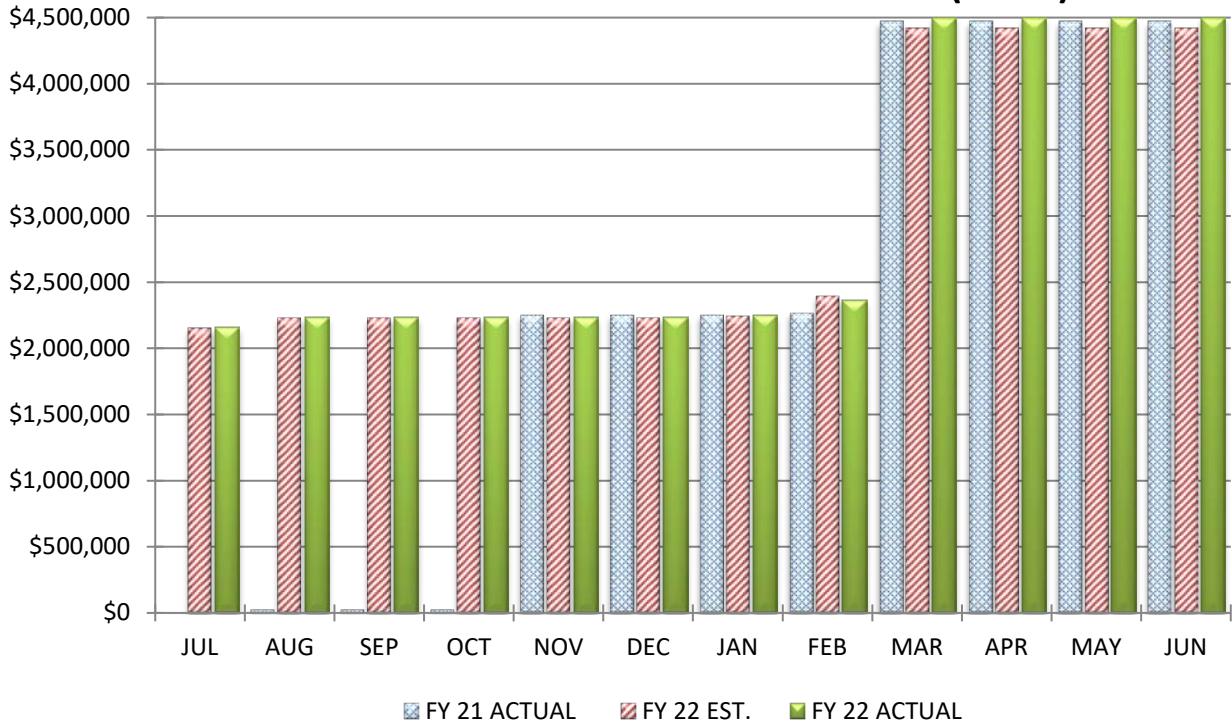
	<b>June 30, 2022</b>	
	<u>MONTH</u>	<u>YEAR-TO-DATE</u>
Actual Real Estate Tax Receipts	\$0	\$22,993,047
Estimated Real Estate Tax Receipts	\$0	\$22,630,628
Variance From Estimate	\$0 OVER	\$362,419
Variance From Estimate	0.00% OVER	1.60%
Actual Prior Year	\$0	\$20,952,954
Total 2021-2022 Estimate		\$22,630,628
Percent Of Total Estimate Received		101.60%
Percent Of Budget Year Completed	12 months	100.00%

**COMMENTS:** We ended the fiscal year with a positive variance. We received our final settlement for general property taxes in March, and with this settlement, we were happy to see that our receipts are on track and slightly over our annual projections. We continued to see growth in our property taxes with the growth in our community.

## COMPARISON OF TOTAL MONTHLY TANGIBLE PERSONAL PROPERTY TAX (PUPP)



## COMPARISON OF TOTAL YEAR-TO-DATE TANGIBLE PERSONAL PROPERTY TAX (PUPP)

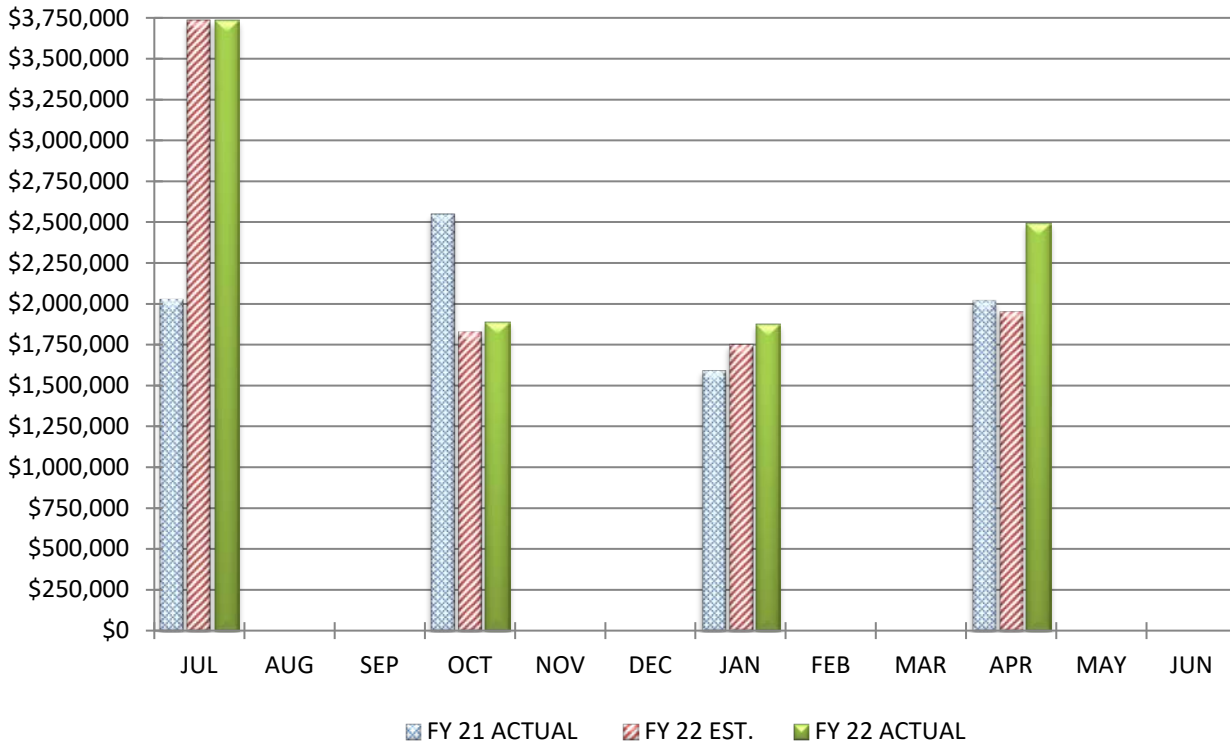


**COMPARISON OF TANGIBLE PERSONAL PROPERTY TAX (PUPP)**

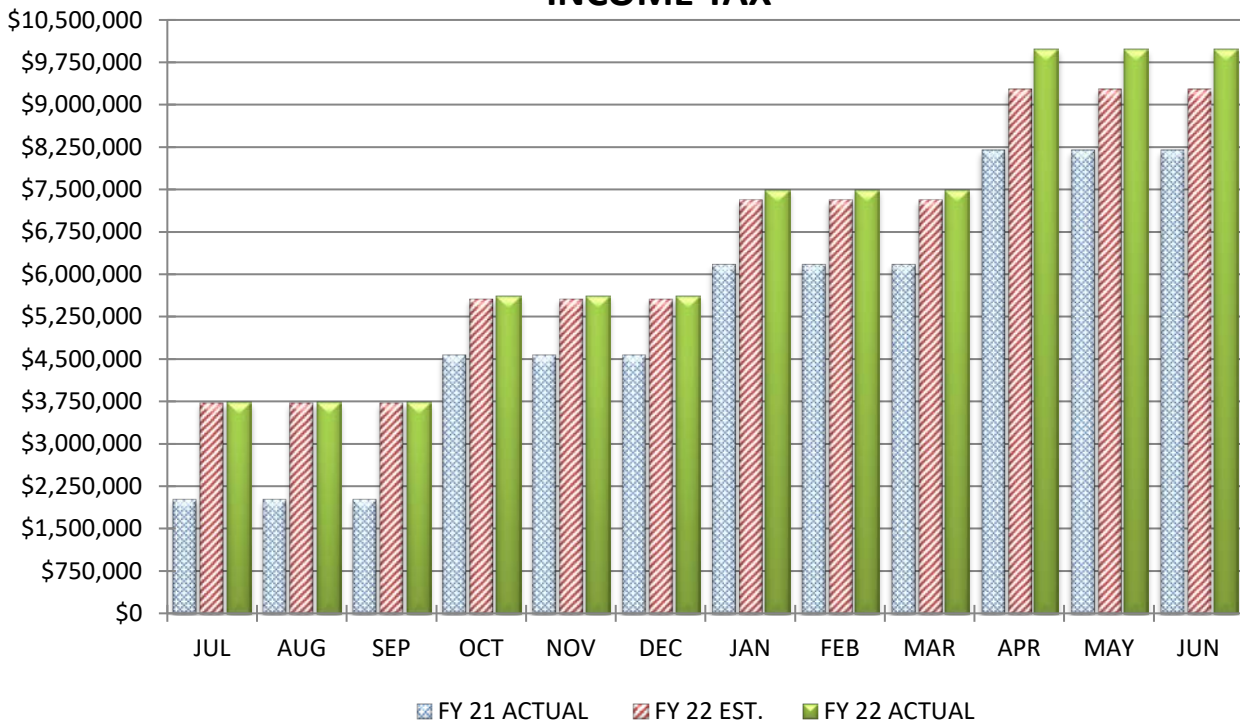
	<b>June 30, 2022</b>	
	<u>MONTH</u>	<u>YEAR-TO-DATE</u>
Actual PUPP Tax Receipts	\$0	\$4,496,663
Estimated PUPP Tax Receipts	\$0	\$4,419,541
Variance From Estimate	\$0 OVER	\$77,122
Variance From Estimate	0.00% OVER	1.75%
Actual Prior Year	\$0	\$4,471,439
Total 2021-2022 Estimate		\$4,419,541
Percent Of Total Estimate Received		101.75%
Percent Of Budget Year Completed	12 months	100.00%

**COMMENTS:** We received our final settlement for tangible personal property taxes in March, and with this settlement, we have continued to see an increase in this area. While we are still told to anticipate decreases in this valuation area due to the depreciation of the AEP substation, we have continued to see increases due to new development infrastructure. We end the fiscal year with a positive variance in the revenue category compared to our original estimates.

## COMPARISON OF TOTAL MONTHLY INCOME TAX



## COMPARISON OF TOTAL YEAR-TO-DATE INCOME TAX





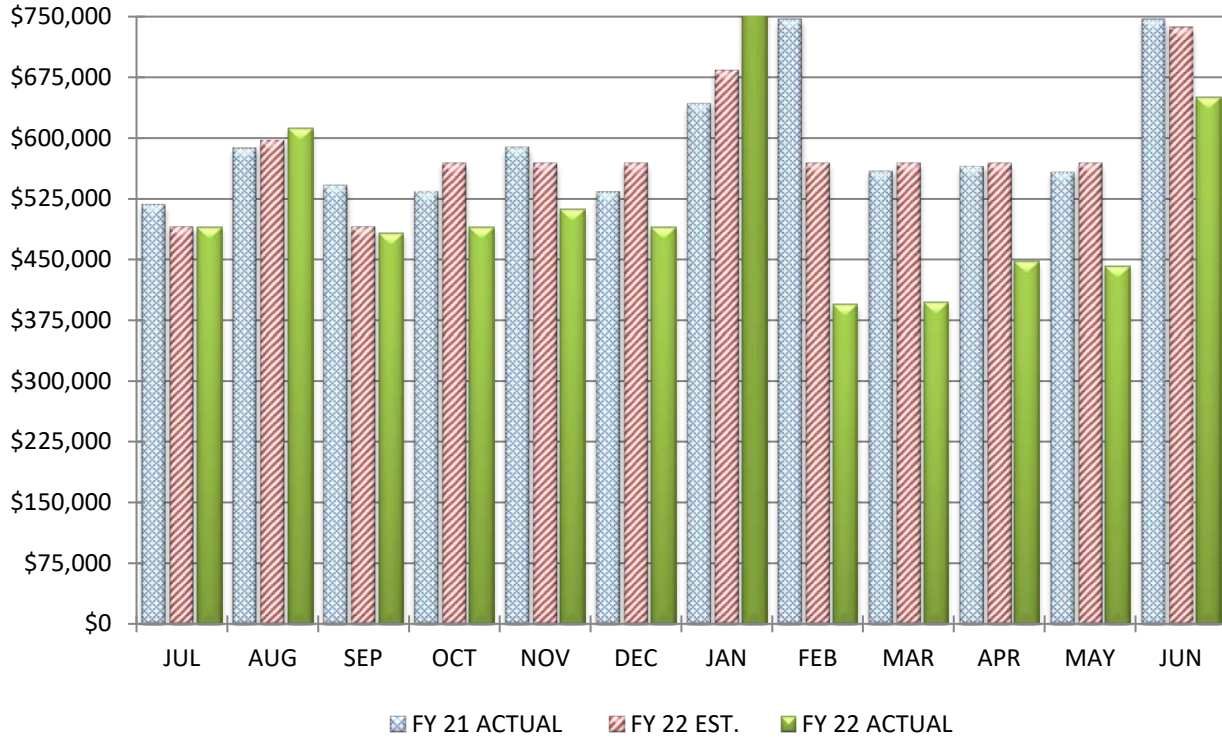
**COMPARISON OF INCOME TAX**

**June 30, 2022**

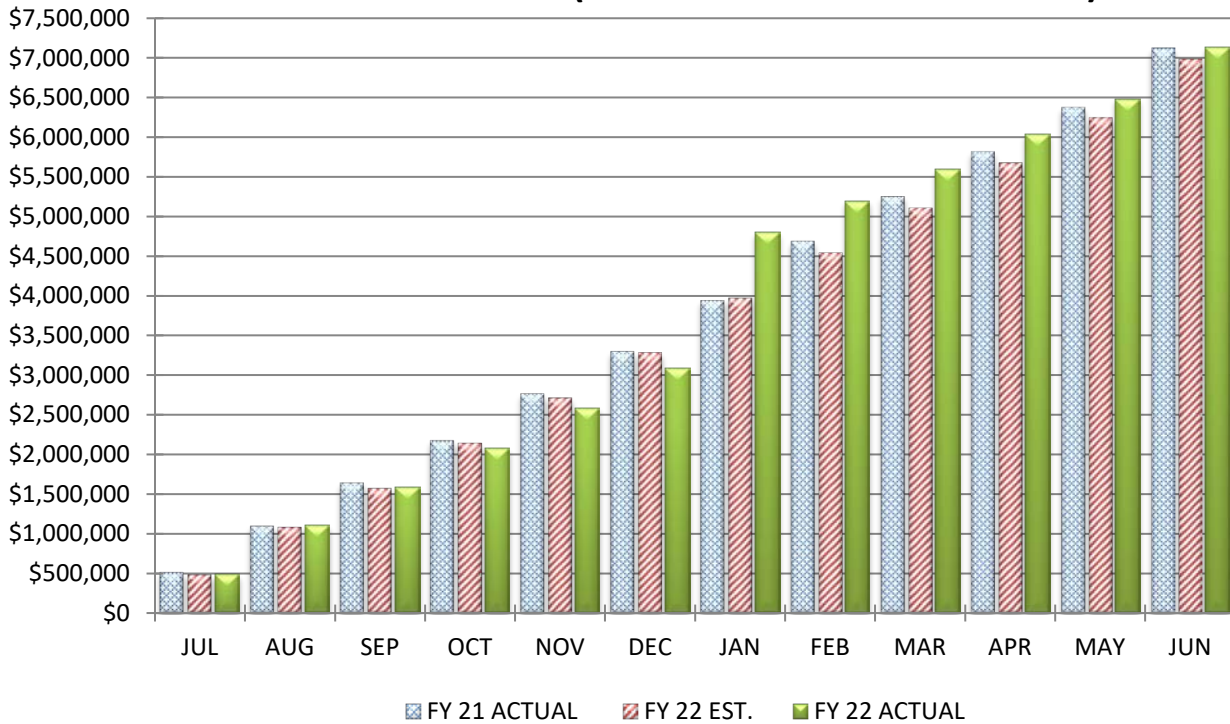
	<u>MONTH</u>		<u>YEAR-TO-DATE</u>
Actual State Receipts	\$0		\$9,983,767
Estimated State Receipts	\$0		\$9,269,915
Variance From Estimate	\$0	OVER	\$713,852
Variance From Estimate	0.00%	OVER	7.70%
Actual Prior Year	\$0		\$8,188,767
Total 2021-2022 Estimate			\$9,269,915
Percent Of Total Estimate Received			107.70%
Percent Of Budget Year Completed	12 months		100.00%

**COMMENTS:** We ended the fiscal year with a positive variance in our income tax collections. The previous two fiscal years (FY20 and FY21) both were impacted by COVID-19 due to tax filing deadline changes and economic fluctuations. Our current fiscal year (FY22) appears to have aligned more closely with our historical collection patterns. Due to the uncertainties of the previous two years, the income tax collections are a challenging area to anticipate, but we are thankful that these resources have rebounded, and we are ending with a favorable variance in this revenue line.

### COMPARISON OF TOTAL MONTHLY STATE GRANTS-IN-AID (UNRESTRICTED & RESTRICTED)



### COMPARISON OF TOTAL YEAR-TO-DATE STATE GRANTS-IN-AID (UNRESTRICTED & RESTRICTED)

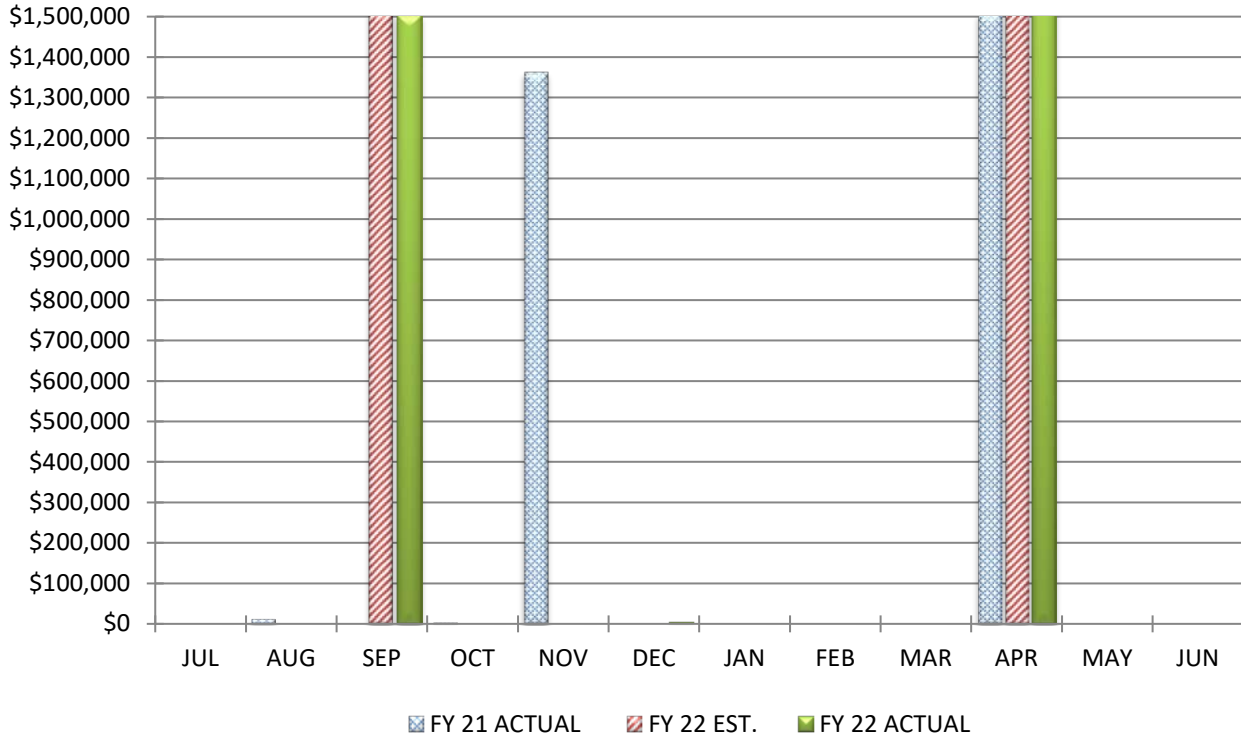


**COMPARISON OF STATE GRANTS-IN-AID (UNRESTRICTED & RESTRICTED)**

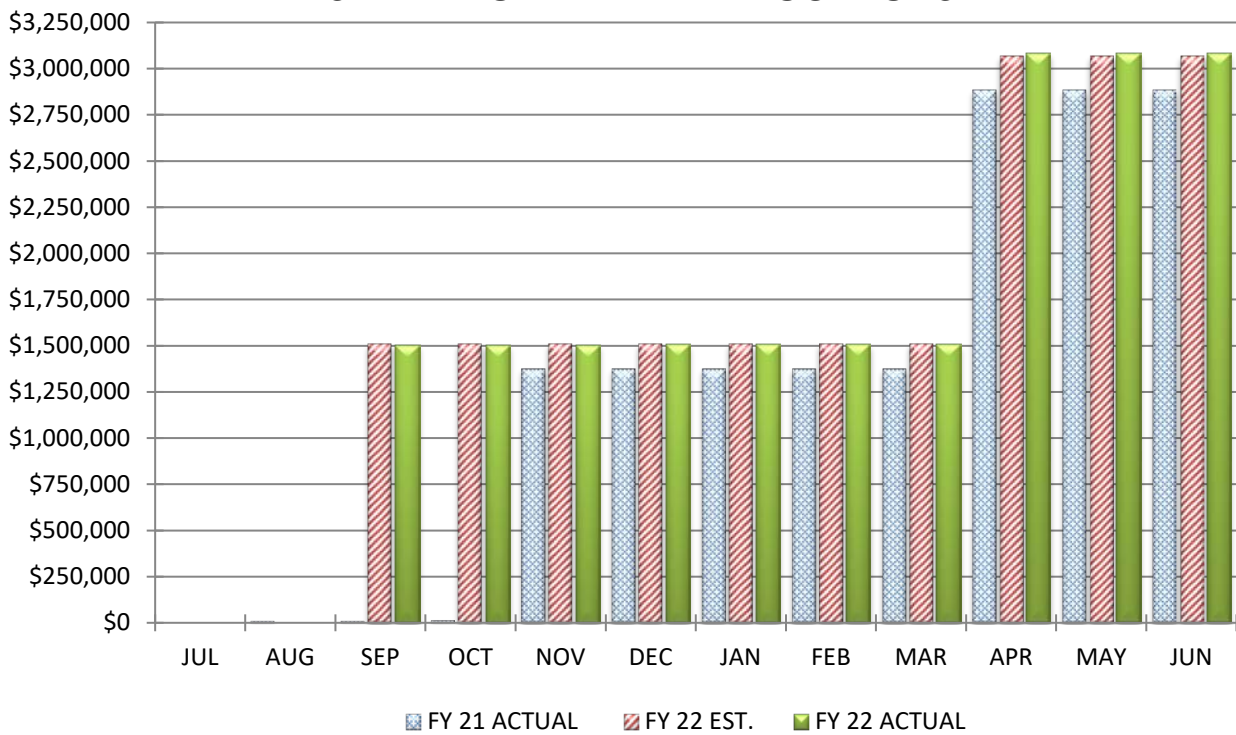
		<b>June 30, 2022</b>		
		<u>MONTH</u>		<u>YEAR-TO-DATE</u>
Actual State Receipts		\$650,902		\$7,132,709
Estimated State Receipts		\$736,822		\$6,981,314
Variance From Estimate	UNDER	(\$85,920)	OVER	\$151,395
Variance From Estimate	UNDER	-11.66%	OVER	2.17%
Actual Prior Year		\$746,733		\$7,123,583
Total 2021-2022 Estimate				\$6,981,314
Percent Of Total Estimate Received				102.17%
Percent Of Budget Year Completed		12 months		100.00%

**COMMENTS:** We are ending the fiscal year with a positive variance in our combined restricted and unrestricted grants-in-aid. The new school funding formula began to be utilized in January 2022. With this rollout, our January payments included "lump-sum true-up" payments, which caused our monthly and year-to-date totals to be well over estimates. There were some areas of the formula calculation that showed we had been "overpaid," which were deducted over the remaining fiscal year payments. This caused our actual receipts to be under estimates for the February through June months. Ultimately, as the above information notes, our actual revenues for this area were a little above current projections due to Ohio Casino, additional aid items for special education preschool and transportation, and catastrophic cost reimbursements being greater than originally anticipated. With such vast changes in the way funding is calculated, we are pleased that we are able to end the fiscal year with a positive variance overall.

## COMPARISON OF TOTAL MONTHLY STATE PROPERTY TAX ALLOCATIONS



## COMPARISON OF TOTAL YEAR-TO-DATE STATE PROPERTY TAX ALLOCATIONS

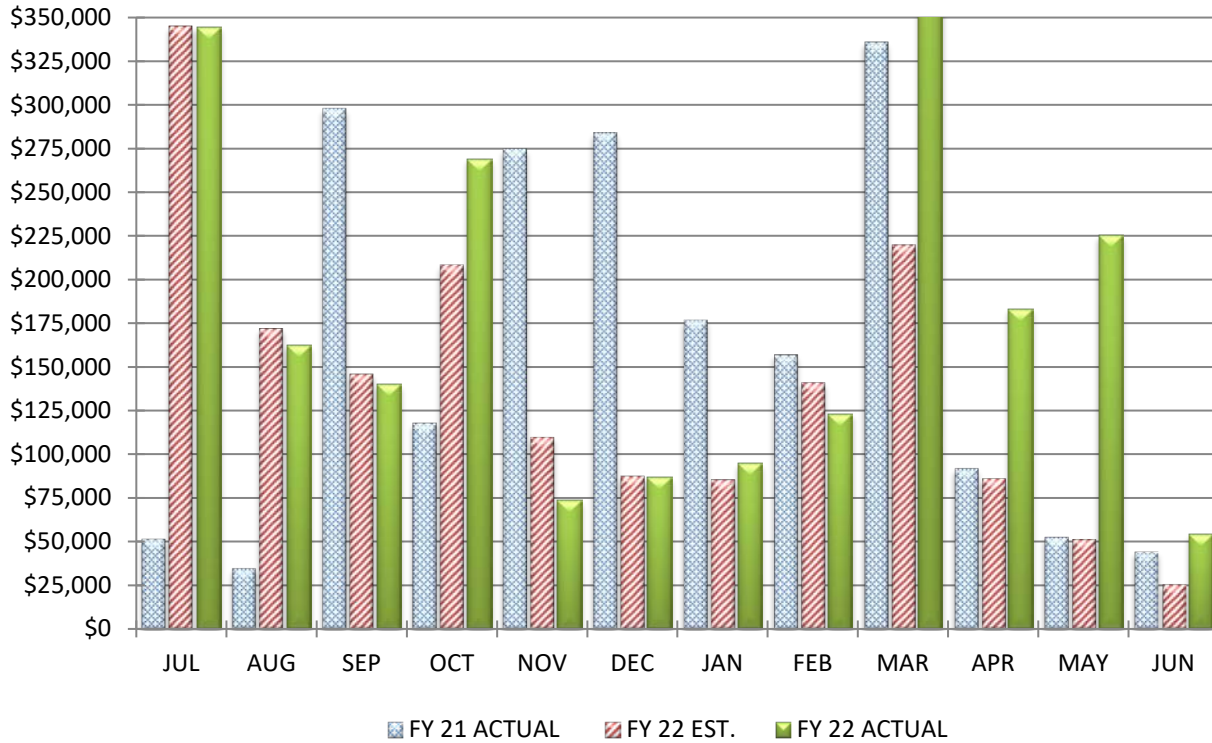


**COMPARISON OF STATE PROPERTY TAX ALLOCATIONS**

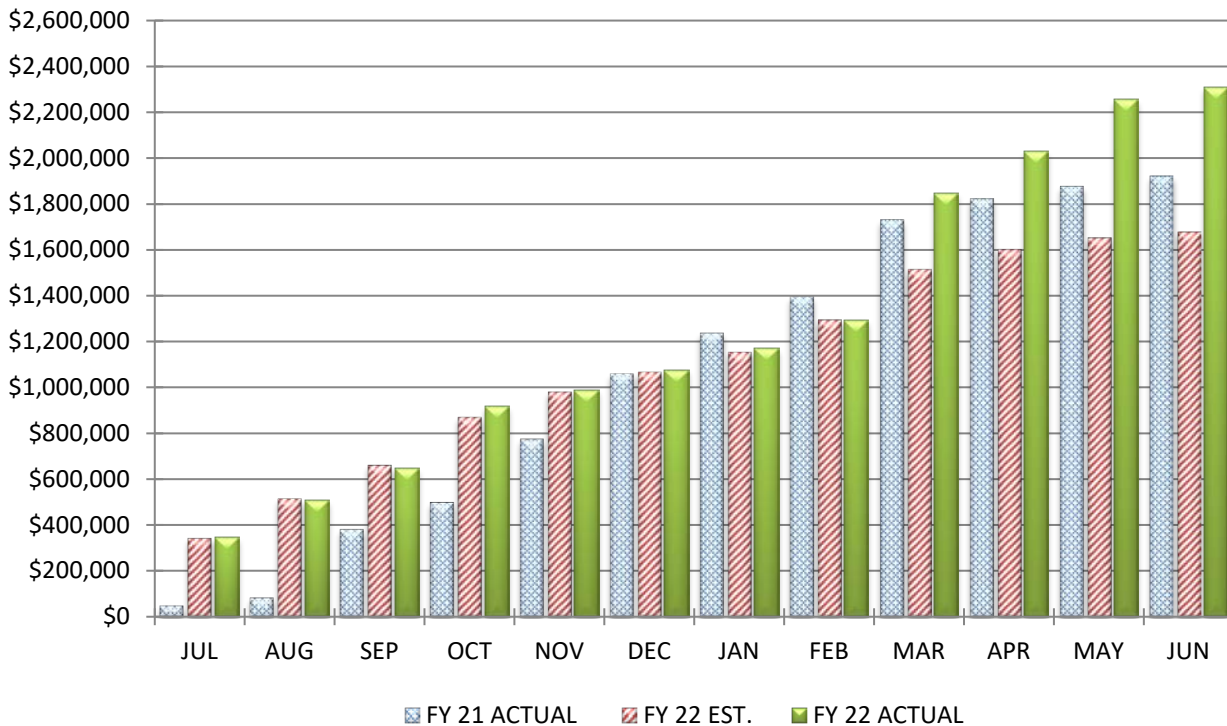
	<b>June 30, 2022</b>		
	<u>MONTH</u>		<u>YEAR-TO-DATE</u>
Actual Tax Allocation Receipts	\$0		\$3,084,552
Estimated Tax Allocation Receipts	\$0		\$3,070,499
Variance From Estimate	\$0	OVER	\$14,053
Variance From Estimate	0.00%	OVER	0.46%
Actual Prior Year	\$0		\$2,886,085
Total 2021-2022 Estimate			\$3,070,499
Percent Of Total Estimate Received			100.46%
Percent Of Budget Year Completed		12 months	100.00%

**COMMENTS:** We were on target with annual estimates in the state property tax allocation area of our revenues and ended the fiscal year with a positive variance.

## COMPARISON OF TOTAL MONTHLY OTHER REVENUES & OTHER FINANCING SOURCES



## COMPARISON OF TOTAL YEAR-TO-DATE OTHER REVENUES & OTHER FINANCING SOURCES



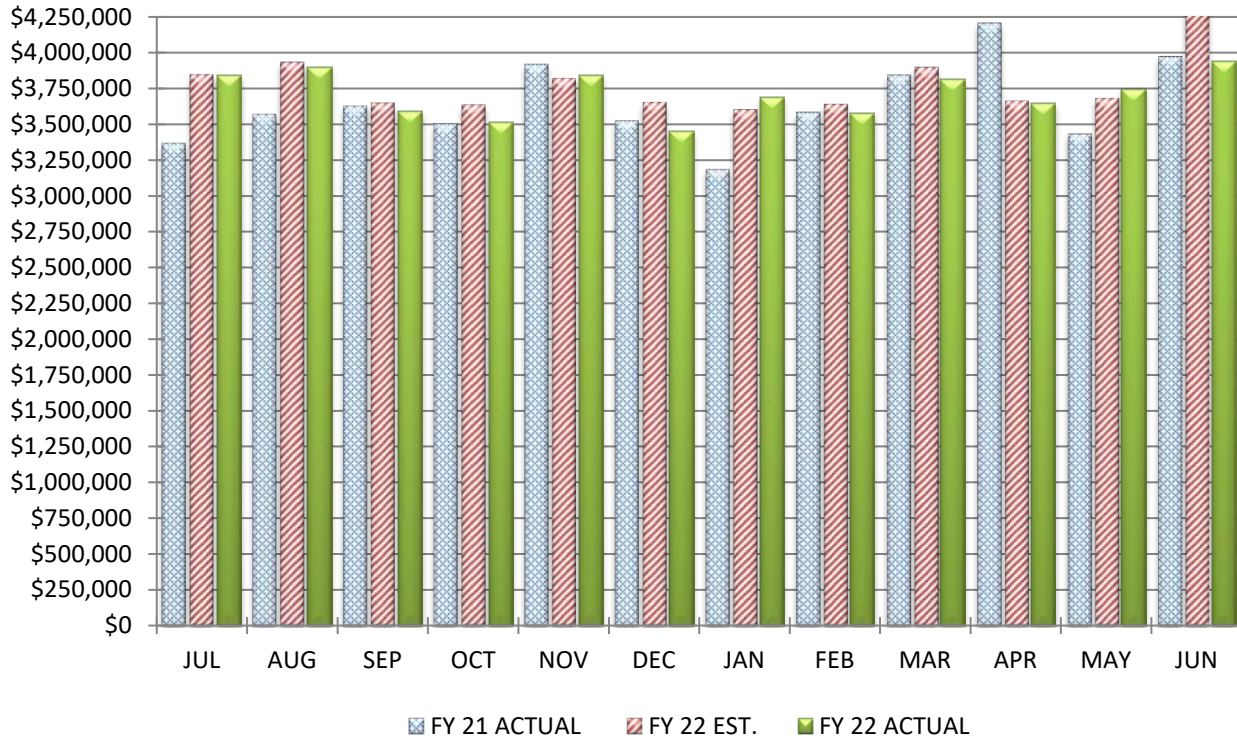
**COMPARISON OF OTHER REVENUES & OTHER FINANCING SOURCES**

**June 30, 2022**

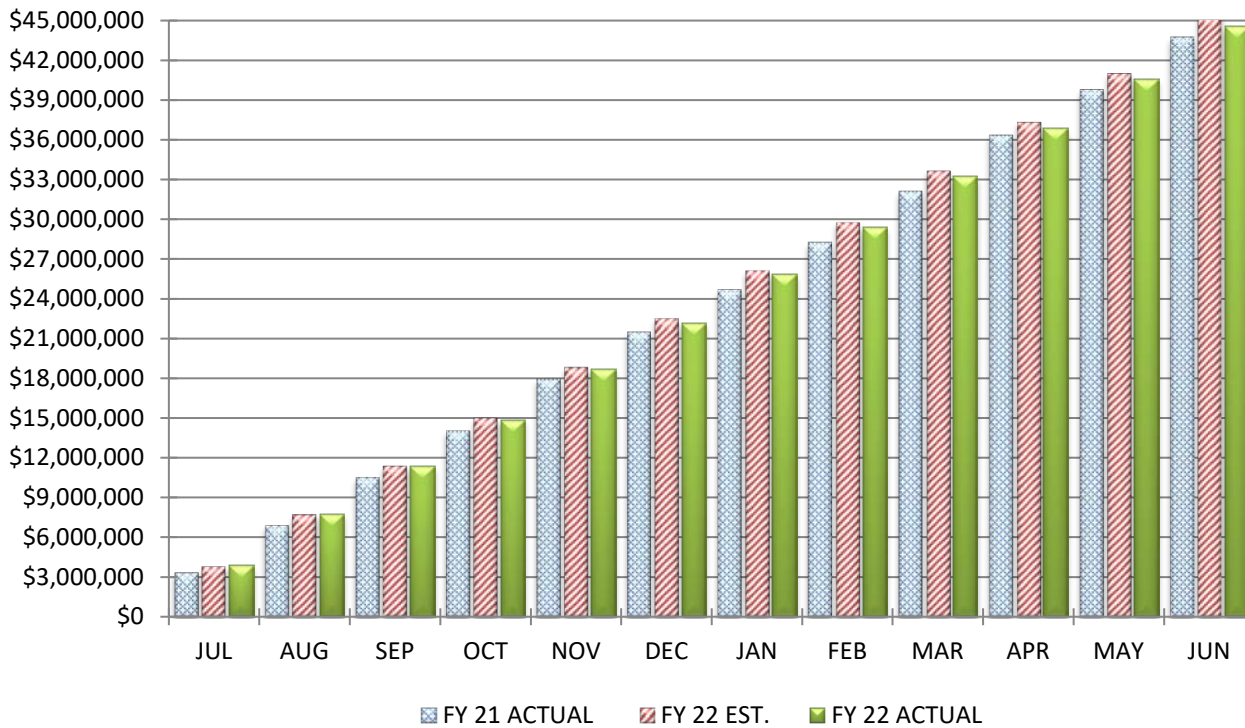
		<u>MONTH</u>		<u>YEAR-TO-DATE</u>
Actual Other Receipts		\$54,167		\$2,309,592
Estimated Other Receipts		\$25,659		\$1,678,049
Variance From Estimate	OVER	\$28,508	OVER	\$631,543
Variance From Estimate	OVER	111.10%	OVER	37.64%
Actual Prior Year		\$44,409		\$1,919,353
Total 2021-2022 Estimate				\$1,678,049
Percent Of Total Estimate Received				137.64%
Percent Of Budget Year Completed		12 months		100.00%

**COMMENTS:** We ended the fiscal year with a positive variance in our estimated other revenues & other financing sources for the fiscal year. This is due to our Medicaid for school program reimbursement receipts being higher than expected and a large Medicaid settlement payment of approximately \$160,000 received in March. In total our Medicaid payments are around \$291,000. In addition, we received a refund of around \$182,000 from the Delaware County Auditor for auditor and treasurer fees that were not needed for the 2020 triennial update. These additional revenue collections were the primary reasons for our favorable variance in this revenue area for the fiscal year.

## COMPARISON OF TOTAL MONTHLY EXPENDITURES & OTHER FINANCING USES



## COMPARISON OF TOTAL YEAR-TO-DATE EXPENDITURES & OTHER FINANCING USES



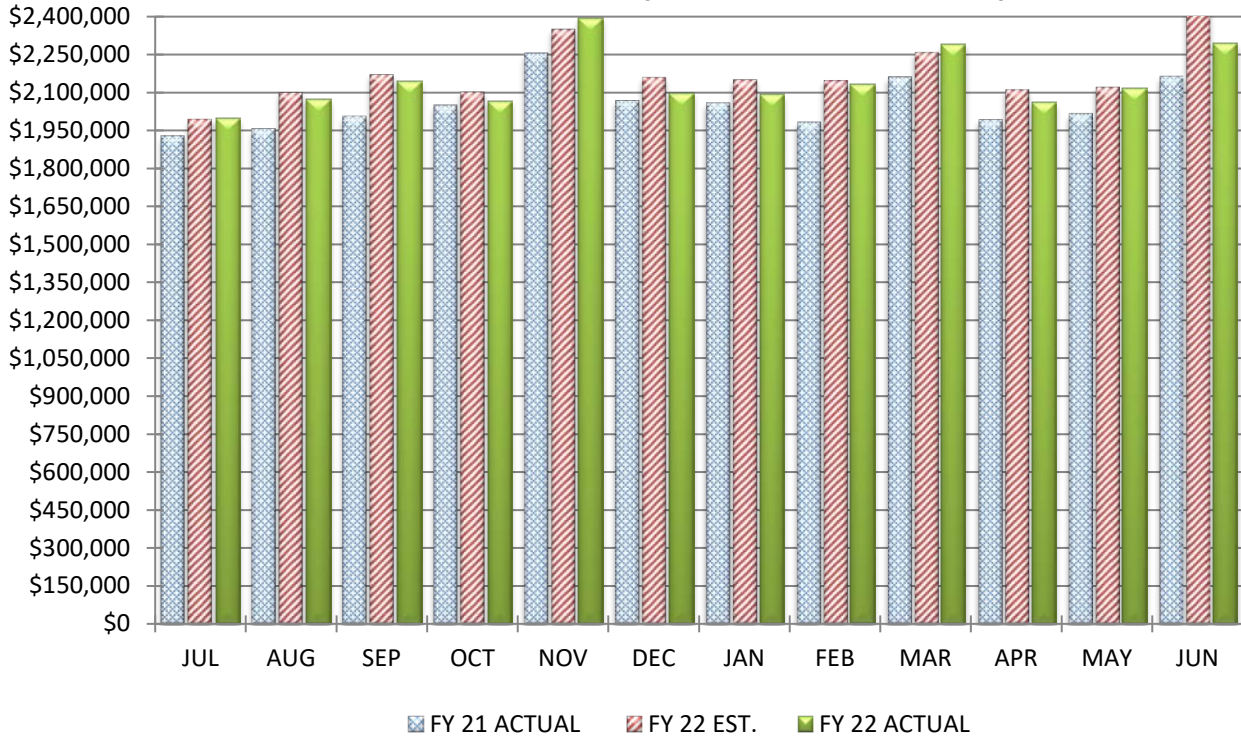


**COMPARISON OF TOTAL EXPENDITURES & OTHER FINANCING USES**

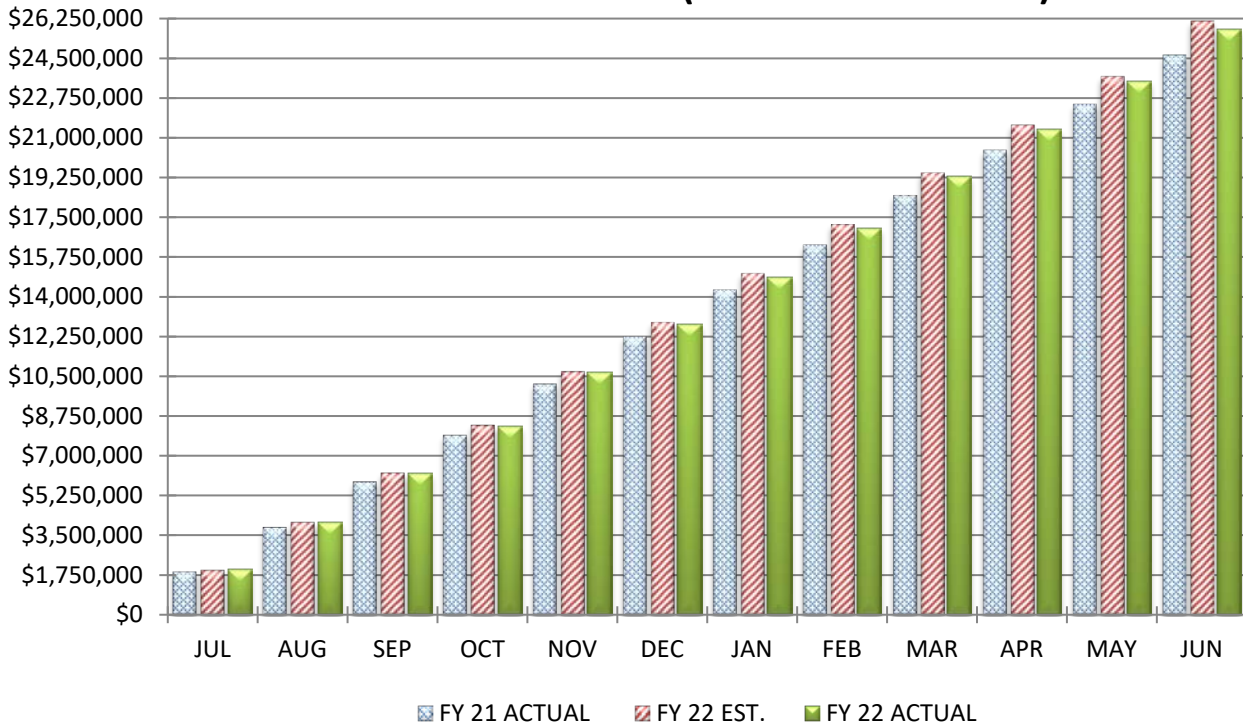
		<b>June 30, 2022</b>			
		<u>MONTH</u>		<u>YEAR-TO-DATE</u>	
Actual Expenditures		\$3,941,187		\$44,554,438	
Estimated Expenditures		\$4,391,090		\$45,395,039	
Variance From Estimate	UNDER	(\$449,903)		UNDER	(\$840,601)
Variance From Estimate	UNDER	-10.25%		UNDER	-1.85%
Actual Prior Year		\$3,973,794		\$43,732,985	
Total 2021-2022 Estimate				\$45,395,039	
Percent Of Total Estimate Spent				98.15%	
Percent Of Budget Year Completed		12 months		100.00%	

**COMMENTS:** We ended the fiscal year with a favorable variance in our overall expenditures. As the year progressed we started to see the impacts of rising costs in or purchased services and supplies expenditure areas and ended over estimates. These are specific budget areas we will have to watch next fiscal year. We saw favorable variance in our salaries and benefits expenditures, as well as, our capital outlays, which provided favorable variances. Further discussion will be had for these areas on the specific sections related to these expenditures areas.

## COMPARISON OF TOTAL MONTHLY PERSONAL SERVICES (SALARIES & WAGES)



## COMPARISON OF TOTAL YEAR-TO-DATE PERSONAL SERVICES (SALARIES & WAGES)

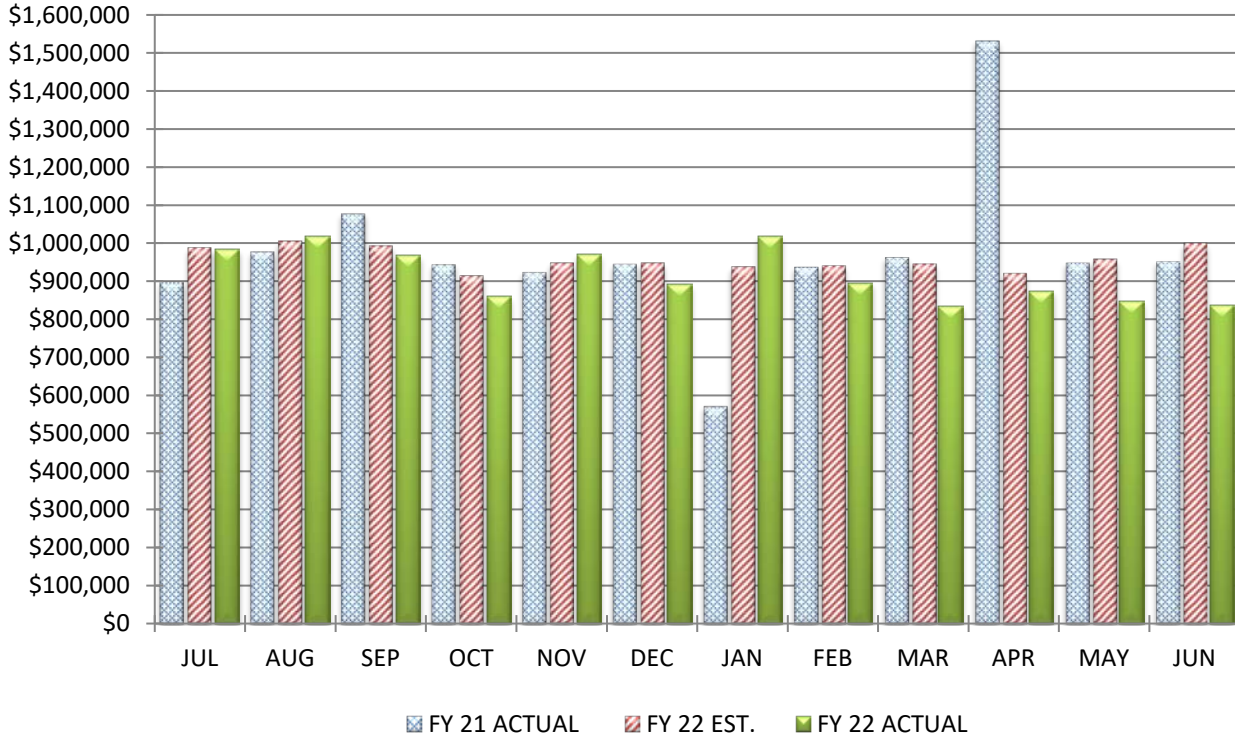


**COMPARISON OF PERSONAL SERVICES (SALARIES & WAGES)**

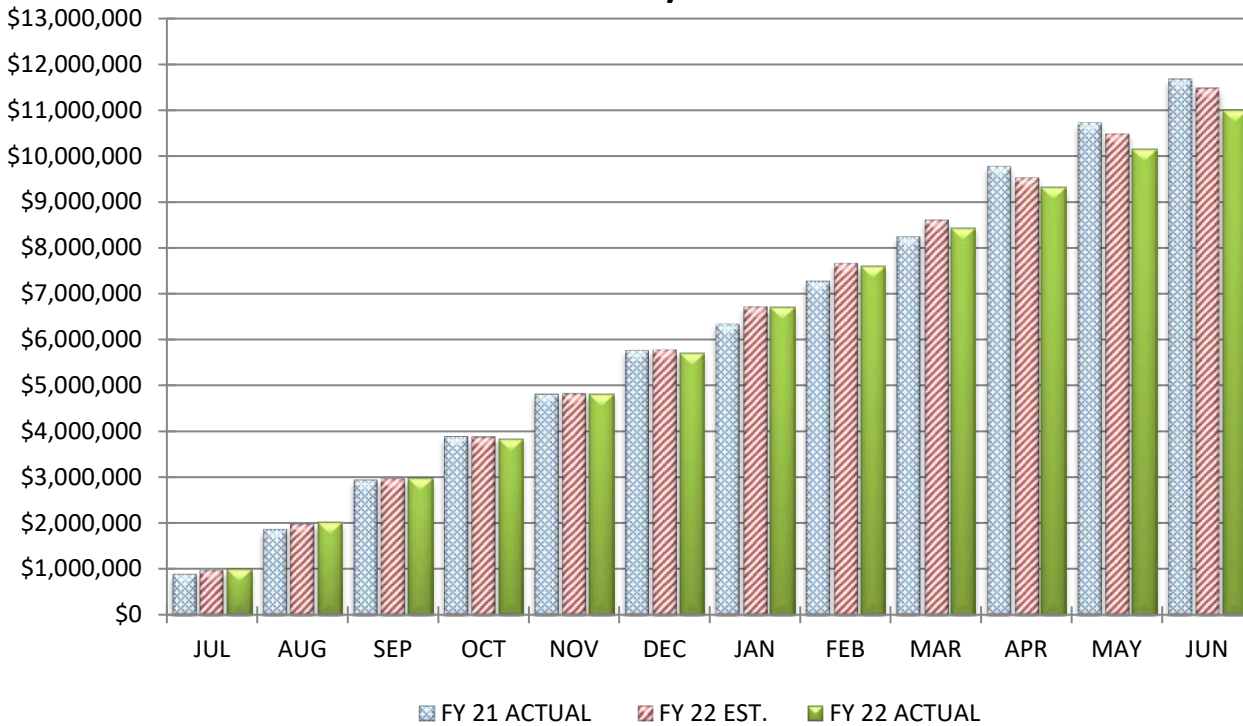
		<b>June 30, 2022</b>		
		MONTH	YEAR-TO-DATE	
Actual Wage Expenditures		\$2,293,371		\$25,761,961
Estimated Wage Expenditures		\$2,439,593		\$26,102,302
Variance From Estimate	UNDER	(\$146,222)	UNDER	(\$340,341)
Variance From Estimate	UNDER	-5.99%	UNDER	-1.30%
Actual Prior Year		\$2,161,221		\$24,622,936
Total 2021-2022 Estimate				\$26,102,302
Percent Of Total Estimate Spent				98.70%
Percent Of Budget Year Completed			12 months	100.00%

**COMMENTS:** We ended the fiscal year with a positive variance. This favorable difference from anticipated costs is due to another year of not being able to fill all planned positions as timely as we would have liked, as well as, savings from replacing more senior employees that either retired or resigned with less experienced individuals. In addition, we have been able to continue to offset some positions that we had originally planned to be paid from the general fund with Elementary and Secondary School Emergency Relief (ESSER) funds. These factors have allowed us to end the fiscal year with a positive variance.

## COMPARISON OF TOTAL MONTHLY EMPLOYEES' RETIREMENT/INSURANCE BENEFITS



## COMPARISON OF TOTAL YEAR-TO-DATE EMPLOYEES' RETIREMENT/INSURANCE BENEFITS

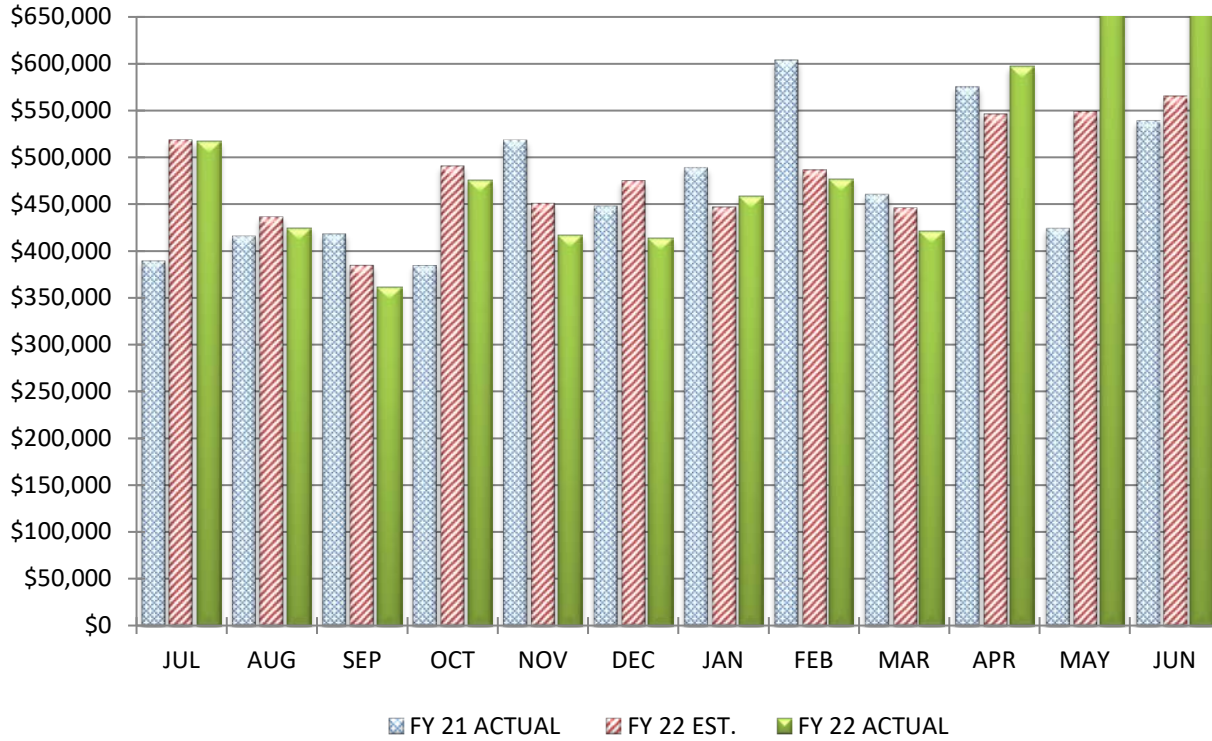


**COMPARISON OF EMPLOYEES' RETIREMENT/INSURANCE BENEFITS**

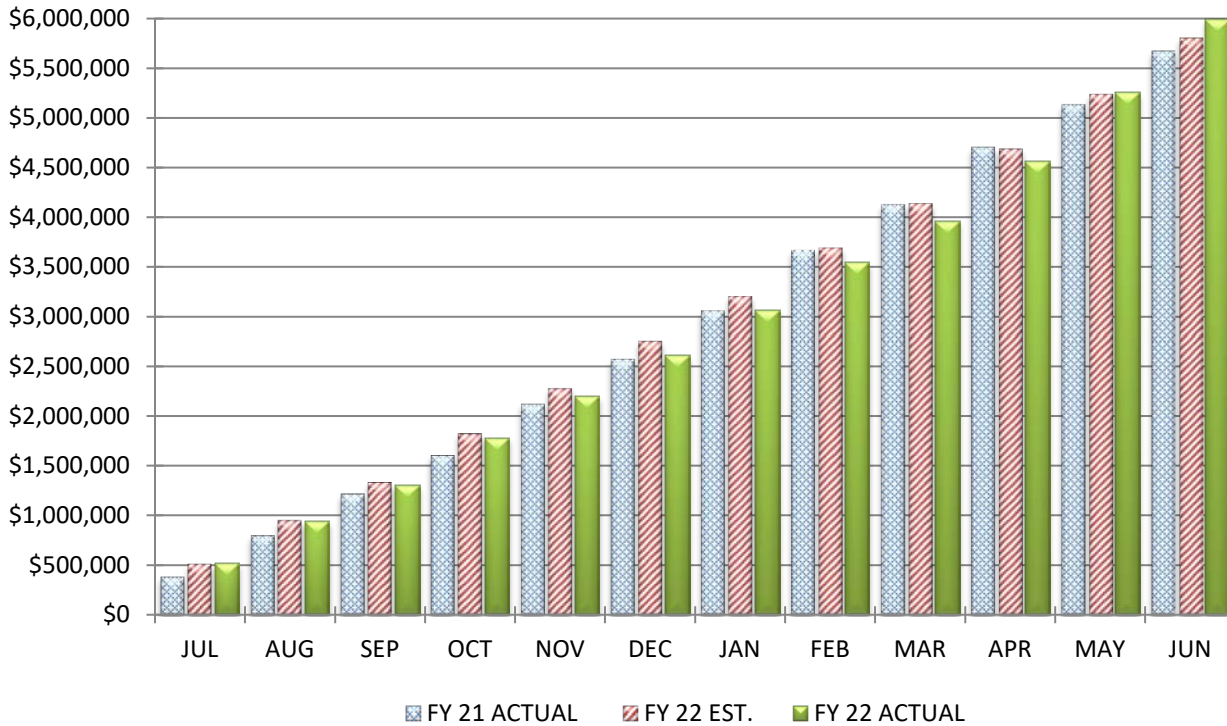
		<b>June 30, 2022</b>			
		<u>MONTH</u>		<u>YEAR-TO-DATE</u>	
Actual Fringe Benefit Expenditures		\$836,100		\$10,995,215	
Estimated Fringe Benefit Expenditures		\$997,508		\$11,477,008	
Variance From Estimate	UNDER	(\$161,408)	UNDER	(\$481,793)	
Variance From Estimate	UNDER	-16.18%	UNDER	-4.20%	
Actual Prior Year		\$952,387		\$11,676,260	
Total 2021-2022 Estimate				\$11,477,008	
Percent Of Total Estimate Spent				95.80%	
Percent Of Budget Year Completed			12 months	100.00%	

**COMMENTS:** We ended the fiscal year with a positive variance in our employees' retirement/insurance benefits expenditure area. There are a couple of factors leading to this positive variance. First, our salaries are running under, which will also lead to our wage-related benefits to be running under estimates. In addition, our insurance costs are a little under our anticipated trend due to lower employee participation in our insurance benefits than we had expected. These factors combined aided us in ending the year with a positive variance.

## COMPARISON OF TOTAL MONTHLY PURCHASED SERVICES



## COMPARISON OF TOTAL YEAR-TO-DATE PURCHASED SERVICES



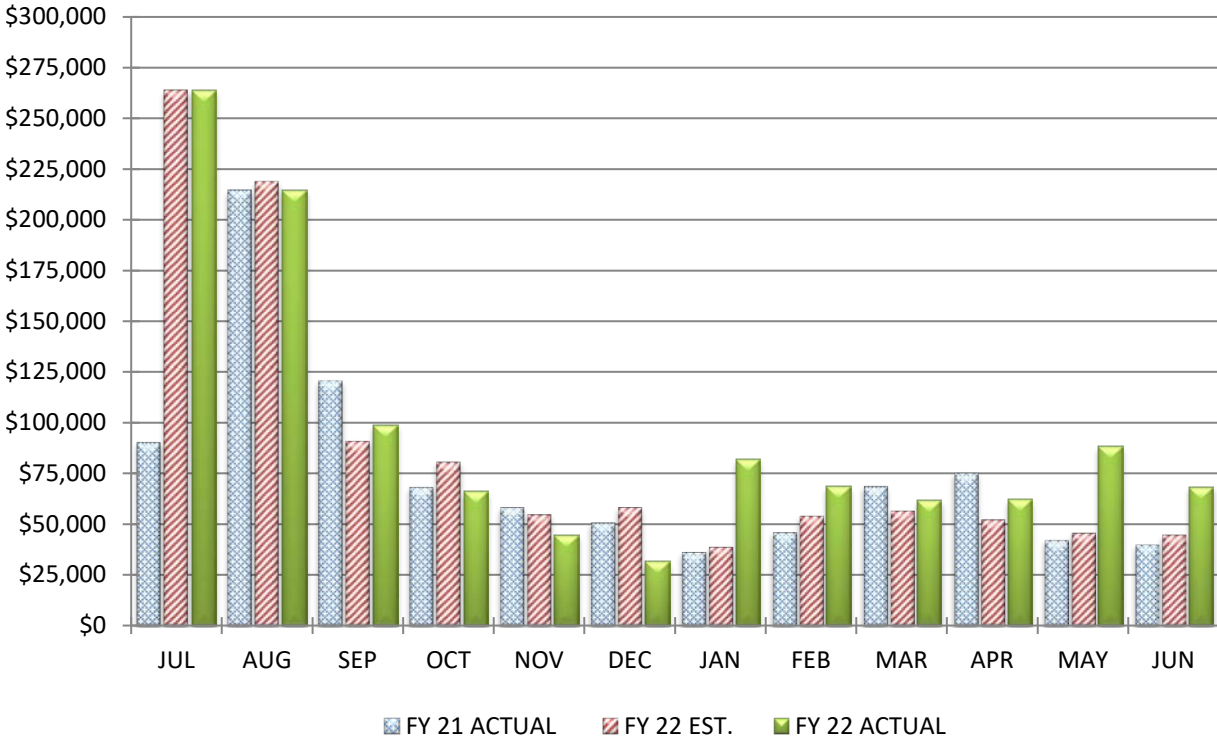
**COMPARISON OF PURCHASED SERVICES**

**June 30, 2022**

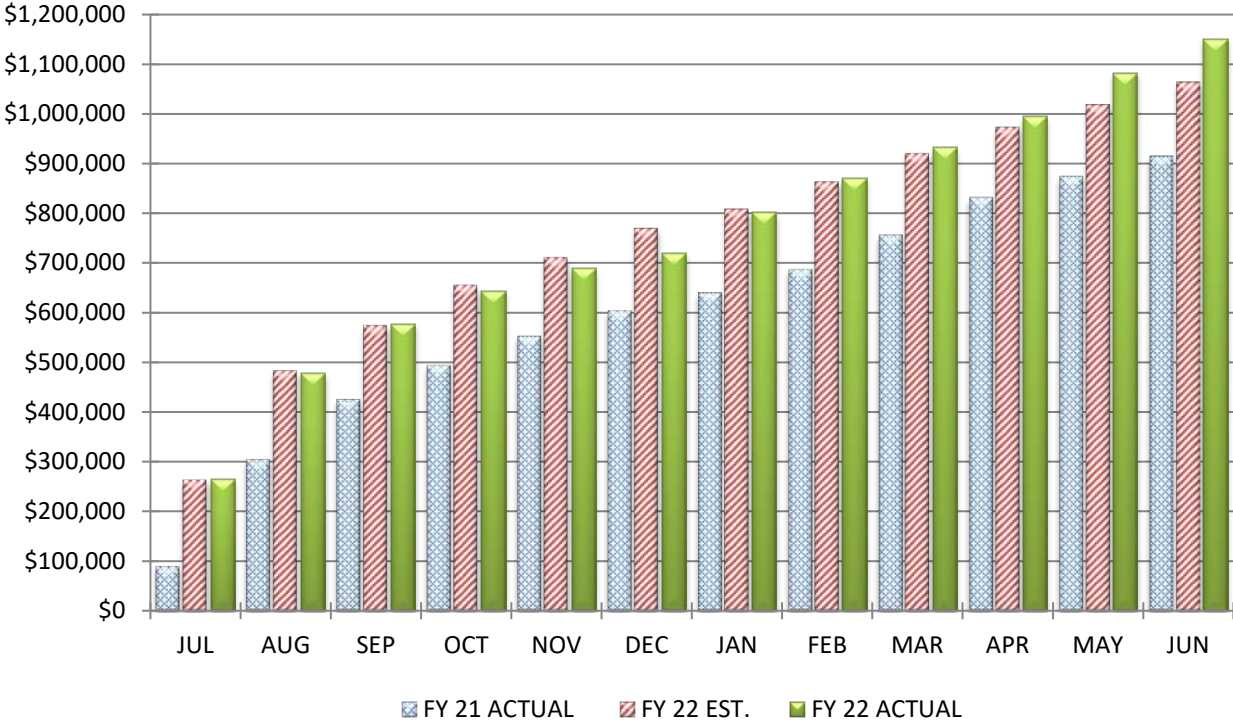
		<u>MONTH</u>		<u>YEAR-TO-DATE</u>
Actual Service Expenditures		\$737,835		\$5,992,864
Estimated Service Expenditures		\$565,354		\$5,797,074
Variance From Estimate	OVER	\$172,481	OVER	\$195,790
Variance From Estimate	OVER	30.51%	OVER	3.38%
Actual Prior Year		\$538,668		\$5,665,718
Total 2021-2022 Estimate				\$5,797,074
Percent Of Total Estimate Spent				103.38%
Percent Of Budget Year Completed		12 months		100.00%

**COMMENTS:** We ended the fiscal year with a negative variance in our purchased services. As has been shared previously, there are several factors at play in our purchase services line. We were expecting increases in this expenditure area due to utilities for our new facilities, property insurances, and increased repair costs for all of our facilities, but these have ended up being slightly higher than expected. With our general operations and the opening of our new facilities our utilities have increased around \$420,000 and our maintenance costs are up around \$260,000 over the previous year. In addition, our services purchased through the Educational Service Center of Central Ohio and third-party transportation services are higher than expected. Some expenditure areas that counteracted these increases are due to the changes in the state funding formula and how students are funded where they are educated. We historically had to post an expenditure for items like open enrollment, community school transfers, scholarships and other state tuition programs, which were no longer expenditures for us during the current fiscal year. With the increases noted, we have planned for increases for next fiscal year and will need to watch these areas closely.

### COMPARISON OF TOTAL MONTHLY SUPPLIES AND MATERIALS



### COMPARISON OF TOTAL YEAR-TO-DATE SUPPLIES AND MATERIALS





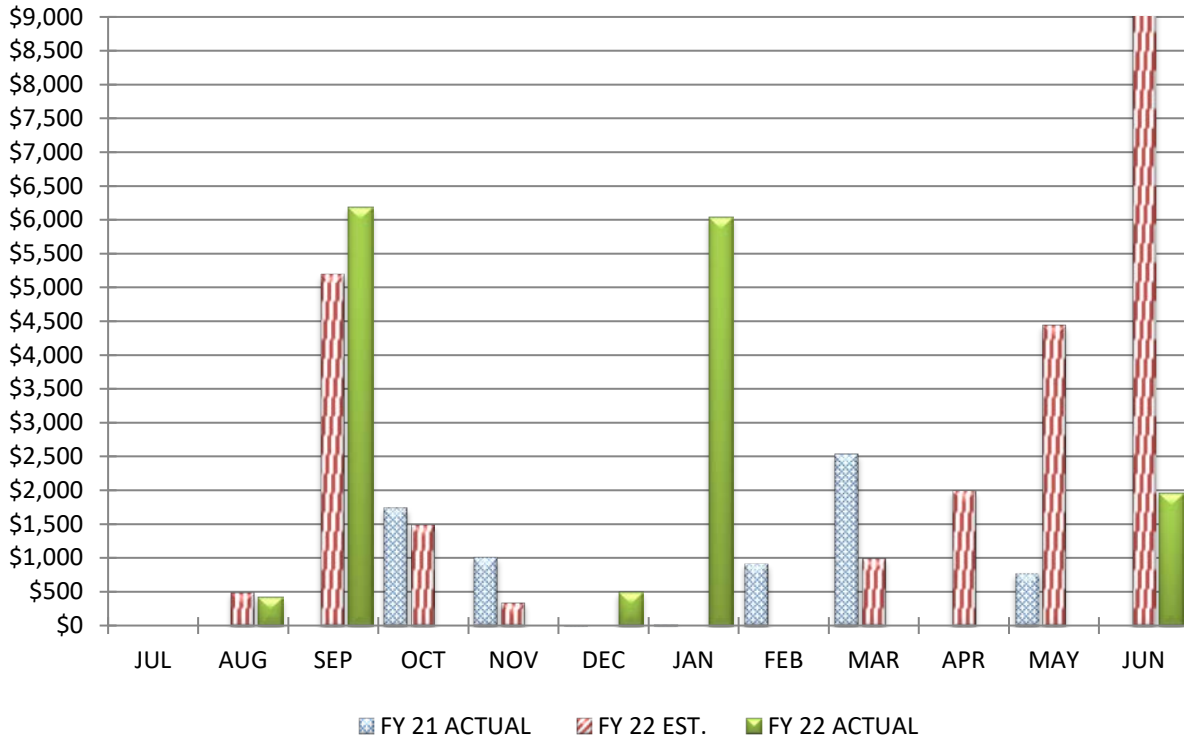
**COMPARISON OF SUPPLIES AND MATERIALS**

**June 30, 2022**

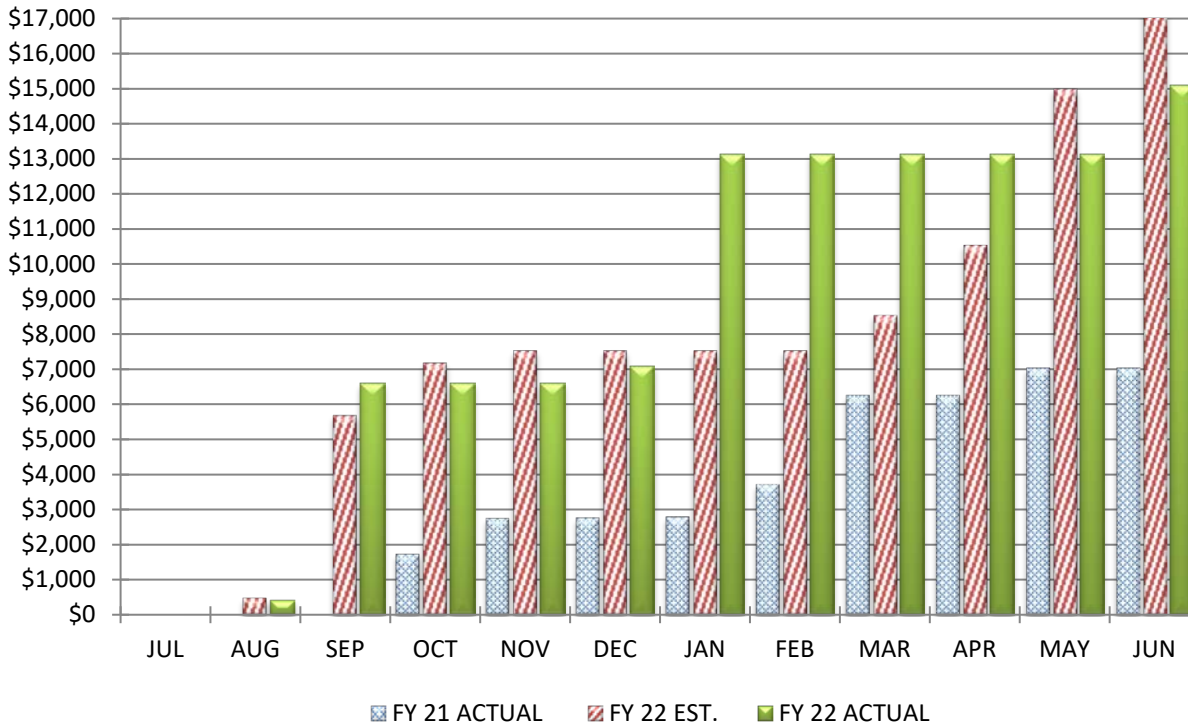
		<u>MONTH</u>		<u>YEAR-TO-DATE</u>
Actual Material Expenditures		\$68,304		\$1,150,900
Estimated Material Expenditures		\$45,129		\$1,063,249
Variance From Estimate	OVER	\$23,175	OVER	\$87,651
Variance From Estimate	OVER	51.35%	OVER	8.24%
Actual Prior Year		\$40,193		\$914,665
Total 2021-2022 Estimate				\$1,063,249
Percent Of Total Estimate Spent				108.24%
Percent Of Budget Year Completed		12 months		100.00%

**COMMENTS:** We ended the fiscal year with a unfavorable variance in our supplies and materials line. The leading factor for this are some significant cost increases for our building maintenance supplies, fuel, and vehicle parts than was original anticipated. With the increases noted, we have planned for increases for next fiscal year and will need to watch these areas closely. While we are significantly over our November forecasted amounts, we are substantially in line with our adjusted May forecast projections.

## COMPARISON OF TOTAL MONTHLY CAPITAL OUTLAY



## COMPARISON OF TOTAL YEAR-TO-DATE CAPITAL OUTLAY

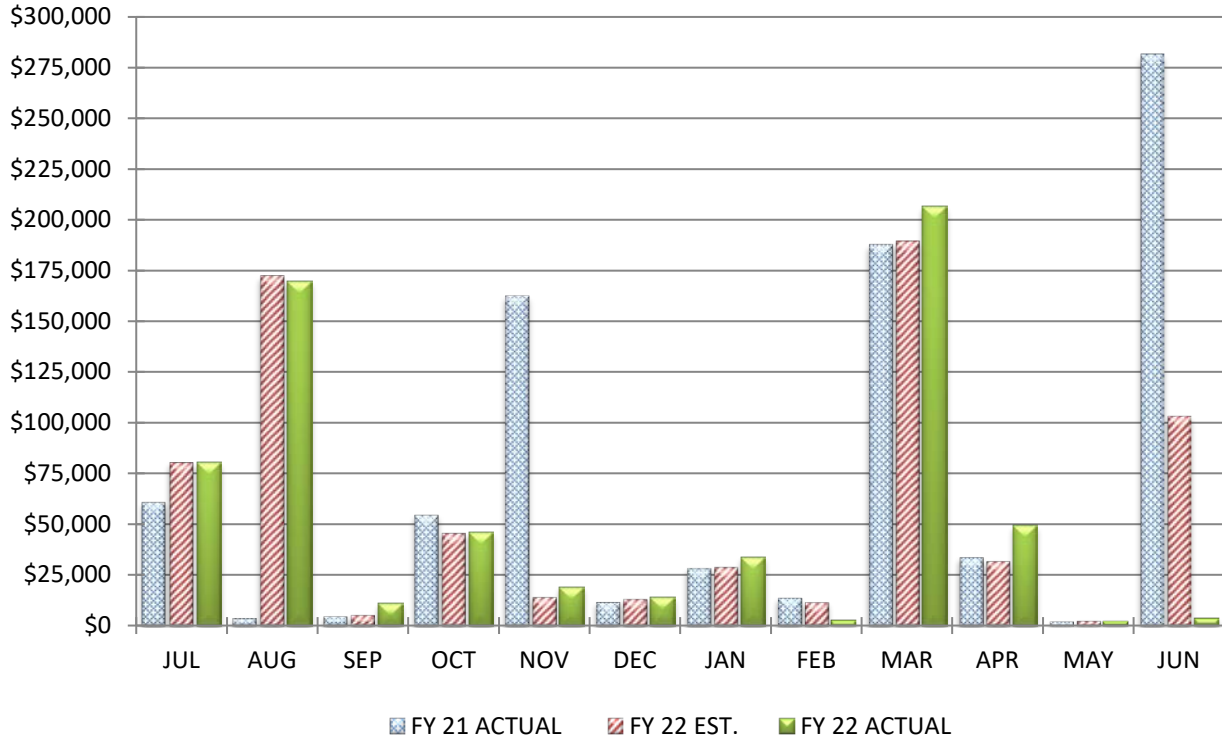


**COMPARISON OF CAPITAL OUTLAY**

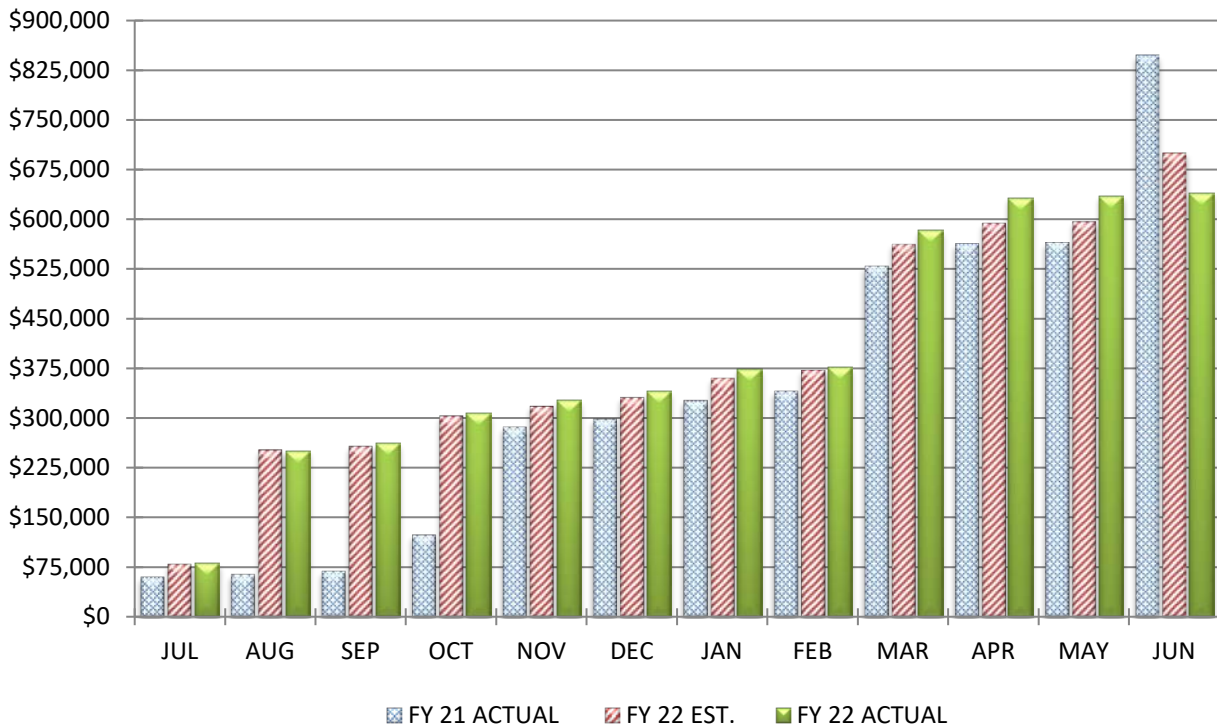
		<b>June 30, 2022</b>			
		<u>MONTH</u>		<u>YEAR-TO-DATE</u>	
Actual Equipment Expenditures		\$1,955		\$15,090	
Estimated Equipment Expenditures		\$240,000		\$255,000	
Variance From Estimate	UNDER	(\$238,045)	UNDER	(\$239,910)	
Variance From Estimate	UNDER	-99.19%	UNDER	-94.08%	
Actual Prior Year		\$0		\$7,015	
Total 2021-2022 Estimate				\$255,000	
Percent Of Total Estimate Spent				5.92%	
Percent Of Budget Year Completed			12 months	100.00%	

**COMMENTS:** We ended the fiscal year with a favorable variance in our capital outlays line. This is due to us being able to utilize some additional Elementary and Secondary School Emergency Relief (ESSER) funds received to offset Chromebook purchases, we had originally planned to be paid from the general fund. This is the primary reason for the favorable variance.

### COMPARISON OF TOTAL MONTHLY OTHER EXPENDITURE OBJECTS & OTHER FINANCING USES



### COMPARISON OF TOTAL YEAR-TO-DATE OTHER EXPENDITURE OBJECTS & OTHER FINANCING USES



**COMPARISON OF OTHER EXPENDITURE OBJECTS & OTHER FINANCING USES**

<b>June 30, 2022</b>					
		MONTH			YEAR-TO-DATE
Actual Other Expenditures		\$3,623			\$638,409
Estimated Other Expenditures		\$103,506			\$700,406
Variance From Estimate	UNDER	(\$99,883)	UNDER		(\$61,997)
Variance From Estimate	UNDER	-96.50%	UNDER		-8.85%
Actual Prior Year		\$281,325			\$846,391
Total 2021-2022 Estimate					\$700,406
Percent Of Total Estimate Spent					91.15%
Percent Of Budget Year Completed			12 months		100.00%

**COMMENTS:** We ended the fiscal year with a favorable variance in our Other Expenditure Objects & Other financing Uses area. We saw an increase in both our Ohio Department of Taxation (ODOT) and Delaware County Auditor processing fees for the collection, processing, and remittance of our income tax and property tax collections, respectively. Since we have seen both our income tax and property tax receipts come in higher than anticipated, this has caused these fees to be slightly higher as well. This increase was counteracted by not needing to make an \$100,000 transfer to the food service fund, which was originally planned. With the federal meal reimbursement program this year, the food service fund has been self sufficient and the transfer was not necessary. This is



BIG WALNUT | INSPIRE  
LOCAL SCHOOLS & GUIDE

---

---

RECEIPTS, EXPENDITURES, AND FUND BALANCES REPORT

AND

MONTHLY SUMMARY CHECK REGISTER

---

---

**JUNE 2022 - RECEIPTS, EXPENDITURES, AND FUND BALANCES REPORT**

Code	Fund Description	FY Beginning Balance	MTD Actual Receipts	FYTD Actual Receipts	MTD Expended	FYTD Expended	Current Balance	FY Encumbrances	FYTD Unencumbered
001	GENERAL	\$13,412,580.60	\$705,068.96	\$50,000,330.18	\$3,941,187.32	\$44,554,438.33	\$18,858,472.45	\$675,717.93	\$18,182,754.52
002	BOND RETIREMENT	5,658,379.48	0.00	9,329,551.05	0.00	9,459,680.30	5,528,250.23	0.00	5,528,250.23
003	PERMANENT IMPROVEMENT	1,292,222.40	0.00	1,573,251.90	1,365.76	1,401,193.08	1,464,281.22	824,611.04	639,670.18
004	BUILDING	27,057,383.59	15,154.43	287,206.11	73,772.24	21,337,592.69	6,006,997.01	5,293,810.21	713,186.80
006	FOOD SERVICE	2,665.99	491,994.65	2,925,759.10	91,130.20	2,104,876.33	823,548.76	18,100.58	805,448.18
012	ADULT EDUCATION	4,019.80	0.00	0.00	0.00	0.00	4,019.80	0.00	4,019.80
014	ROTARY-INTERNAL SERVICES	28,876.30	0.00	21,120.93	17,549.00	39,036.31	10,960.92	0.00	10,960.92
018	PUBLIC SCHOOL SUPPORT	111,989.50	3,800.90	72,882.67	5,638.32	59,604.95	125,267.22	5,043.01	120,224.21
019	OTHER GRANT	7,371.44	0.00	3,000.00	1,161.93	3,450.00	6,921.44	0.00	6,921.44
022	DISTRICT AGENCY	74,170.04	445.15	235,377.46	873.70	233,624.96	75,922.54	2,149.00	73,773.54
028	SPECIAL EDUCATION FUND	892.58	0.00	0.00	0.00	0.00	892.58	0.00	892.58
070	CAPITAL PROJECTS	113,119.03	0.00	1,743.27	0.00	10,939.60	103,922.70	30,984.36	72,938.34
200	STUDENT MANAGED ACTIVITY	147,532.99	627.62	84,413.81	8,557.22	70,087.23	161,859.57	26,166.37	135,693.20
300	DISTRICT MANAGED ACTIVITY	83,317.11	4,609.72	372,338.47	566.56	305,813.90	149,841.68	6,035.84	143,805.84
401	AUXILIARY SERVICES	89,080.87	2.35	387,502.06	40,791.67	337,926.39	138,656.54	20,972.14	117,684.40
451	DATA COMMUNICATION FUND	0.00	0.00	12,600.00	0.00	12,600.00	0.00	0.00	0.00
467	STUDENT WELLNESS AND SUCCESS FUND	144,195.09	0.00	10,925.41	141,170.04	141,170.04	3,025.05	0.00	3,025.05
499	MISCELLANEOUS STATE GRANT FUND	7,523.29	135,000.00	187,179.14	0.00	155,417.27	39,285.16	21,334.82	17,950.34
507	ELEMENTARY AND SECONDARY SCHOOL EMERGENCY RELIEF FUND	(99,059.96)	340,233.43	948,781.72	299,549.84	920,025.17	(70,303.41)	0.00	(70,303.41)
510	CORONA VIRUS RELIEF FUND	(2,575.39)	0.00	2,575.39	0.00	0.00	0.00	0.00	0.00
516	IDEA PART B GRANTS	(46,319.46)	71,624.85	732,405.02	3,778.27	714,711.32	(28,625.76)	36,770.48	(65,396.24)
551	LIMITED ENGLISH PROFICIENCY	0.00	0.00	7,661.67	0.00	7,661.67	0.00	0.00	0.00
572	TITLE I DISADVANTAGED CHILDREN	(14,524.59)	8,722.44	201,180.52	11,132.19	197,788.12	(11,132.19)	5,982.90	(17,115.09)
584	STUDENT SUPPORT AND ACADEMIC ENRICH	0.00	4,276.78	14,588.90	1,667.65	16,137.44	(1,548.54)	0.00	(1,548.54)
587	IDEA PRESCHOOL-HANDICAPPED	(309.00)	1,425.08	26,120.69	14,387.31	40,199.00	(14,387.31)	0.00	(14,387.31)
590	IMPROVING TEACHER QUALITY	(1,870.92)	948.00	14,680.69	16,035.28	28,845.05	(16,035.28)	13,781.58	(29,816.86)
599	MISCELLANEOUS FED. GRANT FUND	(250.44)	0.00	0.00	0.00	(250.44)	0.00	0.00	0.00
<b>Grand Total</b>		<b>\$48,070,410.34</b>	<b>\$1,783,934.36</b>	<b>\$67,442,250.75</b>	<b>\$4,540,069.87</b>	<b>\$82,152,568.71</b>	<b>\$33,360,092.38</b>	<b>\$6,981,460.26</b>	<b>\$26,378,632.12</b>

## Big Walnut Local Schools Disbursement Report-All-20220630

Check #	Check Type	Vendor #	Primary Name	Date	Amount	Reconcile Date	Status	Void Date	Type
0	Electronic	900001	PNC Bank - Visa	6/15/2022	\$ 16,696.38	6/30/2022	RECONCILED		ACCOUNTS_PAYA BLE
0	Electronic			6/15/2022	2,889.53		OUTSTANDING		PAYROLL
0	Electronic			6/15/2022	1,322,854.39	6/30/2022	RECONCILED		PAYROLL
0	Electronic	900500	Payroll Account	6/21/2022	23,290.06	6/30/2022	RECONCILED		ACCOUNTS_PAYA BLE
0	Electronic	910000	STATE TEACHERS	6/21/2022	136,496.02	6/30/2022	RECONCILED		ACCOUNTS_PAYA BLE
0	Electronic			6/30/2022	1,085,251.78	6/30/2022	RECONCILED		PAYROLL
0	Electronic			6/30/2022	41,212.50	6/30/2022	RECONCILED		PAYROLL
0	Electronic	900800	Delta Dental Plan of Ohio, Inc	6/29/2022	12,563.52	6/30/2022	RECONCILED		ACCOUNTS_PAYA BLE
0	Electronic	900025	Dearborn Life Insurance Co	6/29/2022	1,655.64	6/30/2022	RECONCILED		ACCOUNTS_PAYA BLE
0	Electronic	910000	STATE TEACHERS	6/29/2022	89,303.98	6/30/2022	RECONCILED		ACCOUNTS_PAYA BLE
0	Electronic	991739	Anthem Blue Cross Blue Shield	6/29/2022	516,886.59	6/30/2022	RECONCILED		ACCOUNTS_PAYA BLE
0	Electronic	920000	SCHOOL EMPLOYEES	6/29/2022	41,230.38	6/30/2022	RECONCILED		ACCOUNTS_PAYA BLE
0	Electronic	900500	Payroll Account	6/29/2022	32,935.00	6/30/2022	RECONCILED		ACCOUNTS_PAYA BLE
0	Electronic	900035	ArbiterPay Trust Account	6/30/2022	275.00	6/30/2022	RECONCILED		ACCOUNTS_PAYA BLE
0	Electronic	900500	Payroll Account	6/15/2022	12,418.81	6/30/2022	RECONCILED		ACCOUNTS_PAYA BLE
0	Electronic	920000	SCHOOL EMPLOYEES	6/15/2022	48,917.62	6/30/2022	RECONCILED		ACCOUNTS_PAYA BLE
127256	Check	122	Lieurance, Margaret A	6/10/2022	31.59	6/30/2022	RECONCILED		ACCOUNTS_PAYA BLE
127257	Check	707	Yum-ee Donuts, Inc.	6/10/2022	272.00	6/30/2022	RECONCILED		ACCOUNTS_PAYA BLE
127258	Check	1046	KE-WA-PA SALES & SERVICE	6/10/2022	625.07	6/30/2022	RECONCILED		ACCOUNTS_PAYA BLE
127259	Check	1064	Multi Ventures Limited	6/10/2022	24,240.00		OUTSTANDING		ACCOUNTS_PAYA BLE
127260	Check	1115	Del-Co Water Co.	6/10/2022	5,791.28	6/30/2022	RECONCILED		ACCOUNTS_PAYA BLE
127261	Check	1122	MT Business Technologies Inc	6/10/2022	937.67	6/30/2022	RECONCILED		ACCOUNTS_PAYA BLE
127262	Check	1536	Transportation Accessories Co	6/10/2022	170.02	6/30/2022	RECONCILED		ACCOUNTS_PAYA BLE
127263	Check	2038	Gordon Food Service	6/10/2022	1,176.36	6/30/2022	RECONCILED		ACCOUNTS_PAYA BLE
127264	Check	2502	VILLAGE OF SUNBURY	6/10/2022	4,207.54	6/30/2022	RECONCILED		ACCOUNTS_PAYA BLE
127265	Check	2504	American Electric	6/10/2022	38,102.71	6/30/2022	RECONCILED		ACCOUNTS_PAYA BLE
127266	Check	3058	Stanton's Sheet	6/10/2022	154.33	6/30/2022	RECONCILED		ACCOUNTS_PAYA BLE



## Big Walnut Local Schools Disbursement Report-All-20220630

Check #	Check Type	Vendor #	Primary Name	Date	Amount	Reconcile Date	Status	Void Date	Type
127267	Check	3137	Music, Inc. Tristar Transportation Co	6/10/2022	\$ 14,083.43	6/30/2022	RECONCILED		BLE ACCOUNTS_PAYA
127268	Check	5183	Apple Computer, Inc.	6/10/2022	2,168.00	6/30/2022	RECONCILED		BLE ACCOUNTS_PAYA
127269	Check	5237	ESC of Central Ohio	6/10/2022	39,797.39	6/30/2022	RECONCILED		BLE ACCOUNTS_PAYA
127270	Check	5534	META - Marion Office	6/10/2022	4,076.04	6/30/2022	RECONCILED		BLE ACCOUNTS_PAYA
127271	Check	5725	BRICKER & ECKLER LLP	6/10/2022	8,224.00	6/30/2022	RECONCILED		BLE ACCOUNTS_PAYA
127272	Check	5830	Lakeshore Learning Materials	6/10/2022	68.99	6/30/2022	RECONCILED		BLE ACCOUNTS_PAYA
127273	Check	6330	T-Mobile USA Inc	6/10/2022	280.04	6/30/2022	RECONCILED		BLE ACCOUNTS_PAYA
127274	Check	6335	Verizon Wireless	6/10/2022	229.79	6/30/2022	RECONCILED		BLE ACCOUNTS_PAYA
127275	Check	6372	Cintas Corp. Location #003	6/10/2022	119.87	6/30/2022	RECONCILED		BLE ACCOUNTS_PAYA
127276	Check	6457	Delaware County Sheriff's Offc	6/10/2022	5,491.76	6/30/2022	RECONCILED		BLE ACCOUNTS_PAYA
127277	Check	7483	Croton Craft LLC	6/10/2022	4,877.50		OUTSTANDING		BLE ACCOUNTS_PAYA
127278	Check	7852	Really Good Stuff, LLC	6/10/2022	157.38	6/30/2022	RECONCILED		BLE ACCOUNTS_PAYA
127279	Check	9111	Pyrinex, Inc.	6/10/2022	209,220.00	6/30/2022	RECONCILED		BLE ACCOUNTS_PAYA
127280	Check	70312	Ohio FFA Association, Inc.	6/10/2022	80.00	6/30/2022	RECONCILED		BLE ACCOUNTS_PAYA
127281	Check	723780	Direct Energy Business, LLC	6/10/2022	8,680.89	6/30/2022	RECONCILED		BLE ACCOUNTS_PAYA
127282	Check	789693	Shelton, Brian	6/10/2022	236.34	6/30/2022	RECONCILED		BLE ACCOUNTS_PAYA
127283	Check	789852	Delaware County Treasurer	6/10/2022	794.89	6/30/2022	RECONCILED		BLE ACCOUNTS_PAYA
127284	Check	789852	Delaware County Treasurer	6/10/2022	17.99	6/30/2022	RECONCILED		BLE ACCOUNTS_PAYA
127285	Check	792107	Great America Leasing Corp	6/10/2022	871.42	6/30/2022	RECONCILED		BLE ACCOUNTS_PAYA
127286	Check	792393	State Security, LLC	6/10/2022	195.00	6/30/2022	RECONCILED		BLE ACCOUNTS_PAYA
127287	Check	792468	Healthcare Billing Services	6/10/2022	605.17	6/30/2022	RECONCILED		BLE ACCOUNTS_PAYA
127288	Check	792556	Consolidated Electric Coop Inc	6/10/2022	35,754.00	6/30/2022	RECONCILED		BLE ACCOUNTS_PAYA
127289	Check	792938	Voss Bros. Sales & Rental	6/10/2022	135.22	6/30/2022	RECONCILED		BLE ACCOUNTS_PAYA
127290	Check	793024	McGraw-Hill Education, Inc.	6/10/2022	10,520.28	6/30/2022	RECONCILED		BLE ACCOUNTS_PAYA

## Big Walnut Local Schools Disbursement Report-All-20220630

Check #	Check Type	Vendor #	Primary Name	Date	Amount	Reconcile Date	Status	Void Date	Type
127291	Check	793435	Houghton Mifflin Harcourt	6/10/2022	\$ 3,394.56	6/30/2022	RECONCILED		ACCOUNTS_PAYA BLE
127292	Check	793710	Rush Truck Centers of Ohio, Inc.	6/10/2022	74.43	6/30/2022	RECONCILED		ACCOUNTS_PAYA BLE
127293	Check	793894	United Dairy, Inc.	6/10/2022	5,601.68	6/30/2022	RECONCILED		ACCOUNTS_PAYA BLE
127294	Check	794068	Roger E. Howard	6/10/2022	9,065.77	6/30/2022	RECONCILED		ACCOUNTS_PAYA BLE
127295	Check	794587	The College Board	6/10/2022	17,549.00	6/30/2022	RECONCILED		ACCOUNTS_PAYA BLE
127296	Check	794665	Keating, Robin	6/10/2022	24.57	6/30/2022	RECONCILED		ACCOUNTS_PAYA BLE
127297	Check	795054	Columbus Kenworth Inc.	6/10/2022	1,921.20	6/30/2022	RECONCILED		ACCOUNTS_PAYA BLE
127298	Check	795116	R & R Services Plus LLC	6/10/2022	450.00	6/30/2022	RECONCILED		ACCOUNTS_PAYA BLE
127299	Check	795181	Time Warner/Spectrum Enterpris	6/10/2022	604.88	6/30/2022	RECONCILED		ACCOUNTS_PAYA BLE
127300	Check	795183	EduEverything, Inc.	6/10/2022	290.00		OUTSTANDING		ACCOUNTS_PAYA BLE
127301	Check	795198	Mitchell Lock	6/10/2022	125.00	6/30/2022	RECONCILED		ACCOUNTS_PAYA BLE
127302	Check	795327	Barr, Erin	6/10/2022	50.00	6/30/2022	RECONCILED		ACCOUNTS_PAYA BLE
127303	Check	795332	Wimbish, Thomas	6/10/2022	26.21	6/30/2022	RECONCILED		ACCOUNTS_PAYA BLE
127304	Check	795379	Waterlogic USA Inc.	6/10/2022	94.74	6/30/2022	RECONCILED		ACCOUNTS_PAYA BLE
127305	Check	795469	Viau, Elaine	6/10/2022	6.99		OUTSTANDING		ACCOUNTS_PAYA BLE
127306	Check	795494	Voorhis Slone Welsh Crossland	6/10/2022	59,679.00	6/30/2022	RECONCILED		ACCOUNTS_PAYA BLE
127307	Check	795553	Background InvestigationBureau	6/10/2022	1,063.15	6/30/2022	RECONCILED		ACCOUNTS_PAYA BLE
127308	Check	795667	Flourish Integrated Therapy, LLC	6/10/2022	460.00	6/30/2022	RECONCILED		ACCOUNTS_PAYA BLE
127309	Check	795685	US Bank National Association	6/10/2022	13,350.59	6/30/2022	RECONCILED		ACCOUNTS_PAYA BLE
127310	Check	795845	Goodrich, Aaron	6/10/2022	50.00	6/30/2022	RECONCILED		ACCOUNTS_PAYA BLE
127311	Check	795869	Buehler, Makayla	6/10/2022	50.00		OUTSTANDING		ACCOUNTS_PAYA BLE
127312	Check	991327	Precision Fields, LLC	6/10/2022	525.00	6/30/2022	RECONCILED		ACCOUNTS_PAYA BLE
127313	Check	991655	Al's Delicious Popcorn	6/10/2022	523.75	6/30/2022	RECONCILED		ACCOUNTS_PAYA BLE

## Big Walnut Local Schools Disbursement Report-All-20220630

Check #	Check Type	Vendor #	Primary Name	Date	Amount	Reconcile Date	Status	Void Date	Type
127314	Check	991658	Chardon Laboratories, Inc.	6/10/2022	\$ 665.00	6/30/2022	RECONCILED		ACCOUNTS_PAYA BLE
127315	Check	991681	Mason, Caylib	6/10/2022	152.51	6/30/2022	RECONCILED		ACCOUNTS_PAYA BLE
127316	Check	991723	Mitchell, Sheila	6/10/2022	819.23	6/30/2022	RECONCILED		ACCOUNTS_PAYA BLE
127317	Check	991725	Right Way Food Service	6/10/2022	3,662.32	6/30/2022	RECONCILED		ACCOUNTS_PAYA BLE
127318	Check	991762	Szucs, Nicholas	6/10/2022	297.65	6/30/2022	RECONCILED		ACCOUNTS_PAYA BLE
127319	Check	991768	AGParts Worldwide, Inc	6/10/2022	14.95	6/30/2022	RECONCILED		ACCOUNTS_PAYA BLE
127320	Check	991769	National Automotive Parts Association	6/10/2022	236.70	6/30/2022	RECONCILED		ACCOUNTS_PAYA BLE
127321	Check	991775	SFR XI Holdings, LLC	6/10/2022	435.00	6/30/2022	RECONCILED		ACCOUNTS_PAYA BLE
127322	Check	991800	EI US, LLC.; dba LearnWell	6/10/2022	538.65	6/30/2022	RECONCILED		ACCOUNTS_PAYA BLE
127323	Check	794487	Partlow, Jeremy	6/15/2022	19.45	6/30/2022	RECONCILED		REFUND
127324	Check	794543	Swank, Pamela J.	6/15/2022	103.50	6/30/2022	RECONCILED		REFUND
127325	Check	794682	Schooley, Melissa	6/15/2022	24.50		OUTSTANDING		REFUND
127326	Check	991041	Couchman, Marisa	6/15/2022	10.50	6/30/2022	RECONCILED		REFUND
127327	Check	991814	Ansel, Kari	6/15/2022	52.25	6/30/2022	RECONCILED		REFUND
127328	Check	991815	Daggett, Stephanie	6/15/2022	31.20		OUTSTANDING		REFUND
127329	Check	991816	Kercsmar, Melanie	6/15/2022	14.25	6/30/2022	RECONCILED		REFUND
127330	Check	991817	McConnell, Sandra	6/15/2022	46.15	6/30/2022	RECONCILED		REFUND
127331	Check	991818	McCullough, Yvonne	6/15/2022	228.20	6/30/2022	RECONCILED		REFUND
127332	Check	991819	Mudre, Sarah	6/15/2022	10.00		OUTSTANDING		REFUND
127333	Check	991820	Roberto, Kelly	6/15/2022	55.00		OUTSTANDING		REFUND
127334	Check	991821	Stewart, Chris	6/15/2022	19.00		OUTSTANDING		REFUND
127335	Check	991822	Washington, Holly	6/15/2022	16.60	6/30/2022	RECONCILED		REFUND
127336	Check	991824	Johnson, Rita	6/15/2022	10.80		OUTSTANDING		REFUND
127337	Check	991825	Zabarsky, Theresa	6/15/2022	22.23	6/30/2022	RECONCILED		REFUND
127338	Check	5237	ESC of Central Ohio	6/15/2022	170.00	6/30/2022	RECONCILED		ACCOUNTS_PAYA BLE
127339	Check	7483	Croton Craft LLC	6/15/2022	235.00		OUTSTANDING		ACCOUNTS_PAYA BLE
127340	Check	791693	Ohio BCI & I	6/15/2022	765.75	6/30/2022	RECONCILED		ACCOUNTS_PAYA BLE
127341	Check	791833	Curtis, Erin	6/15/2022	56.79	6/30/2022	RECONCILED		ACCOUNTS_PAYA BLE
127342	Check	792149	Neely, Tim and Libby	6/15/2022	538.55	6/30/2022	RECONCILED		ACCOUNTS_PAYA BLE

## Big Walnut Local Schools Disbursement Report-All-20220630

Check #	Check Type	Vendor #	Primary Name	Date	Amount	Reconcile Date	Status	Void Date	Type
127343	Check	793078	Truax, Megan (reimbursements)	6/15/2022	\$ 32.00		OUTSTANDING		ACCOUNTS_PAYA BLE
127344	Check	793094	Johnson-Stuber, Christie	6/15/2022	26.03	6/30/2022	RECONCILED		ACCOUNTS_PAYA BLE
127345	Check	793117	Meacham, Christopher Allen	6/15/2022	228.00	6/30/2022	RECONCILED		ACCOUNTS_PAYA BLE
127346	Check	793944	SC Strategic Solutions, LLC	6/15/2022	21,800.00	6/30/2022	RECONCILED		ACCOUNTS_PAYA BLE
127347	Check	794374	Boehm, Dawn	6/15/2022	52.47	6/30/2022	RECONCILED		ACCOUNTS_PAYA BLE
127348	Check	794489	McGraw, Angela	6/15/2022	430.84	6/30/2022	RECONCILED		ACCOUNTS_PAYA BLE
127349	Check	794782	OhioGuidestone	6/15/2022	18,752.70	6/30/2022	RECONCILED		ACCOUNTS_PAYA BLE
127350	Check	794880	Hames, Ryan & Kristi	6/15/2022	1,077.09	6/30/2022	RECONCILED		ACCOUNTS_PAYA BLE
127351	Check	794880	Hames, Ryan & Kristi	6/15/2022	0.01	6/30/2022	RECONCILED		ACCOUNTS_PAYA BLE
127352	Check	795273	Pallone, Noah & Mindi	6/15/2022	538.55	6/30/2022	RECONCILED		ACCOUNTS_PAYA BLE
127353	Check	795283	PaySchools	6/15/2022	143.04	6/30/2022	RECONCILED		ACCOUNTS_PAYA BLE
127354	Check	795339	Whiteside, Justin	6/15/2022	190.00	6/30/2022	RECONCILED		ACCOUNTS_PAYA BLE
127355	Check	795416	Ashley, Justin	6/15/2022	0.01	6/30/2022	RECONCILED		ACCOUNTS_PAYA BLE
127356	Check	795416	Ashley, Justin	6/15/2022	1,077.09	6/30/2022	RECONCILED		ACCOUNTS_PAYA BLE
127357	Check	795421	Beck, Jeremy & Tami	6/15/2022	0.01	6/30/2022	RECONCILED		ACCOUNTS_PAYA BLE
127358	Check	795421	Beck, Jeremy & Tami	6/15/2022	1,077.09	6/30/2022	RECONCILED		ACCOUNTS_PAYA BLE
127359	Check	795423	Henderson, Tonya	6/15/2022	538.55	6/30/2022	RECONCILED		ACCOUNTS_PAYA BLE
127360	Check	795428	Custer, Stephanie	6/15/2022	1,077.09	6/30/2022	RECONCILED		ACCOUNTS_PAYA BLE
127361	Check	795428	Custer, Stephanie	6/15/2022	1,077.11	6/30/2022	RECONCILED		ACCOUNTS_PAYA BLE
127362	Check	795429	Lanker, Stacey & Jon	6/15/2022	538.55	6/30/2022	RECONCILED		ACCOUNTS_PAYA BLE
127363	Check	795430	Mitchell, Marcus & Joy	6/15/2022	538.55	6/30/2022	RECONCILED		ACCOUNTS_PAYA BLE
127364	Check	795431	Place, Zachary & Rebecca	6/15/2022	538.55	6/30/2022	RECONCILED		ACCOUNTS_PAYA BLE
127365	Check	795558	Language Line Services, Inc.	6/15/2022	43.86	6/30/2022	RECONCILED		ACCOUNTS_PAYA BLE
127366	Check	795635	Brentlinger, Laura	6/15/2022	1,077.09	6/30/2022	RECONCILED		ACCOUNTS_PAYA BLE
127367	Check	795635	Brentlinger, Laura	6/15/2022	0.01	6/30/2022	RECONCILED		ACCOUNTS_PAYA BLE

## Big Walnut Local Schools Disbursement Report-All-20220630

Check #	Check Type	Vendor #	Primary Name	Date	Amount	Reconcile Date	Status	Void Date	Type
127368	Check	795639	Pusecker, Jennifer & Dan	6/15/2022	\$ 538.55	6/30/2022	RECONCILED		ACCOUNTS_PAYA BLE
127369	Check	795641	Jones, Nicholas & Sarah	6/15/2022	1,077.11	6/30/2022	RECONCILED		ACCOUNTS_PAYA BLE
127370	Check	795641	Jones, Nicholas & Sarah	6/15/2022	1,077.09	6/30/2022	RECONCILED		ACCOUNTS_PAYA BLE
127371	Check	795643	Winters, Steve & Robin	6/15/2022	0.01	6/30/2022	RECONCILED		ACCOUNTS_PAYA BLE
127372	Check	795643	Winters, Steve & Robin	6/15/2022	1,077.09	6/30/2022	RECONCILED		ACCOUNTS_PAYA BLE
127373	Check	795644	Burns, Robert & Jennifer	6/15/2022	0.01		OUTSTANDING		ACCOUNTS_PAYA BLE
127374	Check	795644	Burns, Robert & Jennifer	6/15/2022	1,077.09	6/30/2022	RECONCILED		ACCOUNTS_PAYA BLE
127375	Check	795793	Shaffer, Matt	6/15/2022	1,077.09	6/30/2022	RECONCILED		ACCOUNTS_PAYA BLE
127376	Check	795793	Shaffer, Matt	6/15/2022	538.56	6/30/2022	RECONCILED		ACCOUNTS_PAYA BLE
127377	Check	795824	Wood, DeAnne	6/15/2022	15.91	6/30/2022	RECONCILED		ACCOUNTS_PAYA BLE
127378	Check	795857	Plummer, Justin A	6/15/2022	72.89	6/30/2022	RECONCILED		ACCOUNTS_PAYA BLE
127379	Check	991307	Woodruff, Chung	6/15/2022	0.01	6/30/2022	RECONCILED		ACCOUNTS_PAYA BLE
127380	Check	991307	Woodruff, Chung	6/15/2022	1,077.09	6/30/2022	RECONCILED		ACCOUNTS_PAYA BLE
127381	Check	991446	Gee, Peggy & Talbot	6/15/2022	538.56	6/30/2022	RECONCILED		ACCOUNTS_PAYA BLE
127382	Check	991446	Gee, Peggy & Talbot	6/15/2022	1,077.09	6/30/2022	RECONCILED		ACCOUNTS_PAYA BLE
127383	Check	991448	McDaniel, Matt & Katie	6/15/2022	1,077.09	6/30/2022	RECONCILED		ACCOUNTS_PAYA BLE
127384	Check	991448	McDaniel, Matt & Katie	6/15/2022	0.01	6/30/2022	RECONCILED		ACCOUNTS_PAYA BLE
127385	Check	991449	Tydings, Brent & Jen Tydings	6/15/2022	1,077.09	6/30/2022	RECONCILED		ACCOUNTS_PAYA BLE
127386	Check	991449	Tydings, Brent & Jen Tydings	6/15/2022	0.01		OUTSTANDING		ACCOUNTS_PAYA BLE
127387	Check	991450	Verne, Beth & Mike	6/15/2022	538.55	6/30/2022	RECONCILED		ACCOUNTS_PAYA BLE
127388	Check	991452	Schiefer, Holly & Chris	6/15/2022	538.55		OUTSTANDING		ACCOUNTS_PAYA BLE
127389	Check	991453	Young, Brian & Shari	6/15/2022	0.01	6/30/2022	RECONCILED		ACCOUNTS_PAYA BLE
127390	Check	991453	Young, Brian & Shari	6/15/2022	1,077.09	6/30/2022	RECONCILED		ACCOUNTS_PAYA BLE
127391	Check	991454	Homkes, Mark & April	6/15/2022	538.56	6/30/2022	RECONCILED		ACCOUNTS_PAYA BLE
127392	Check	991454	Homkes, Mark & April	6/15/2022	1,077.09	6/30/2022	RECONCILED		ACCOUNTS_PAYA BLE

## Big Walnut Local Schools Disbursement Report-All-20220630

Check #	Check Type	Vendor #	Primary Name	Date	Amount	Reconcile Date	Status	Void Date	Type
127393	Check	991607	Haskins, Christina	6/15/2022	\$ 30.01	6/30/2022	RECONCILED		ACCOUNTS_PAYA BLE
127394	Check	991642	Ebright, Brandt	6/15/2022	266.00	6/30/2022	RECONCILED		ACCOUNTS_PAYA BLE
127395	Check	991647	Hegenderfer, Adam and Chrissie	6/15/2022	646.25		OUTSTANDING		ACCOUNTS_PAYA BLE
127396	Check	991647	Hegenderfer, Adam and Chrissie	6/15/2022	323.05		OUTSTANDING		ACCOUNTS_PAYA BLE
127397	Check	991648	Hoffman, Jay and Colleen	6/15/2022	1,077.09	6/30/2022	RECONCILED		ACCOUNTS_PAYA BLE
127398	Check	991648	Hoffman, Jay and Colleen	6/15/2022	0.01	6/30/2022	RECONCILED		ACCOUNTS_PAYA BLE
127399	Check	991649	Porath, Cynthia	6/15/2022	0.01		OUTSTANDING		ACCOUNTS_PAYA BLE
127400	Check	991649	Porath, Cynthia	6/15/2022	1,077.09		OUTSTANDING		ACCOUNTS_PAYA BLE
127401	Check	991650	Rakocy, Joel and Teresa	6/15/2022	538.55	6/30/2022	RECONCILED		ACCOUNTS_PAYA BLE
127402	Check	991682	Anderson, Alexandra	6/15/2022	158.59	6/30/2022	RECONCILED		ACCOUNTS_PAYA BLE
127403	Check	991689	Laubacher, Morgan J	6/15/2022	152.00	6/30/2022	RECONCILED		ACCOUNTS_PAYA BLE
127404	Check	991690	Clark, Alyssa	6/15/2022	97.81	6/30/2022	RECONCILED		ACCOUNTS_PAYA BLE
127405	Check	991717	Miller, Alyssa	6/15/2022	250.96	6/30/2022	RECONCILED		ACCOUNTS_PAYA BLE
127406	Check	991754	I Am Boundless, Inc.	6/15/2022	2,698.50	6/30/2022	RECONCILED		ACCOUNTS_PAYA BLE
127407	Check	991800	EI US, L.L.C.; dba LearnWell	6/15/2022	538.65		OUTSTANDING		ACCOUNTS_PAYA BLE
127408	Check	991823	Newsome, Casie R.	6/15/2022	190.00	6/30/2022	RECONCILED		ACCOUNTS_PAYA BLE
127409	Check	991826	Emmerling, Lisa	6/15/2022	538.55	6/30/2022	RECONCILED		ACCOUNTS_PAYA BLE
127410	Check	991827	Thomas, Shonen	6/15/2022	538.55	6/30/2022	RECONCILED		ACCOUNTS_PAYA BLE
127411	Check	1046	KE-WA-PA SALES & SERVICE	6/22/2022	2,660.59	6/30/2022	RECONCILED		ACCOUNTS_PAYA BLE
127412	Check	1064	Multi Ventures Limited	6/22/2022	1,300.00		OUTSTANDING		ACCOUNTS_PAYA BLE
127413	Check	1536	Transportation Accessories Co	6/22/2022	877.77	6/30/2022	RECONCILED		ACCOUNTS_PAYA BLE
127414	Check	2503	Columbia Gas Of Ohio	6/22/2022	5,459.12	6/30/2022	RECONCILED		ACCOUNTS_PAYA BLE
127415	Check	4154	GOPHER SPORT	6/22/2022	103.50	6/30/2022	RECONCILED		ACCOUNTS_PAYA BLE
127416	Check	5237	ESC of Central Ohio	6/22/2022	7,773.01	6/30/2022	RECONCILED		ACCOUNTS_PAYA BLE
127417	Check	5887	Ohio Petroleum UST Release	6/22/2022	550.00	6/30/2022	RECONCILED		ACCOUNTS_PAYA BLE

## Big Walnut Local Schools Disbursement Report-All-20220630

Check #	Check Type	Vendor #	Primary Name	Date	Amount	Reconcile Date	Status	Void Date	Type
127418	Check	6372	Cintas Corp. Location #003	6/22/2022	\$ 142.73	6/30/2022	RECONCILED		ACCOUNTS_PAYA BLE
127419	Check	6894	Cox, Matthew J.	6/22/2022	46.04	6/30/2022	RECONCILED		ACCOUNTS_PAYA BLE
127420	Check	723780	Direct Energy Business, LLC	6/22/2022	15,271.90	6/30/2022	RECONCILED		ACCOUNTS_PAYA BLE
127421	Check	725642	HEINEMANN PUBLISHING	6/22/2022	900.00	6/30/2022	RECONCILED		ACCOUNTS_PAYA BLE
127422	Check	789712	Leinweber, Nicole	6/22/2022	143.20	6/30/2022	RECONCILED		ACCOUNTS_PAYA BLE
127423	Check	790734	Easton Telecom Services, LLC	6/22/2022	1,474.79	6/30/2022	RECONCILED		ACCOUNTS_PAYA BLE
127424	Check	791311	Clifford C. Seiler, II	6/22/2022	463.00	6/30/2022	RECONCILED		ACCOUNTS_PAYA BLE
127425	Check	791495	Professional Speech Services	6/22/2022	40,740.00	6/30/2022	RECONCILED		ACCOUNTS_PAYA BLE
127426	Check	792393	State Security, LLC	6/22/2022	1,373.50	6/30/2022	RECONCILED		ACCOUNTS_PAYA BLE
127427	Check	792640	Beem's BP Distributing, Inc.	6/22/2022	1,016.33	6/30/2022	RECONCILED		ACCOUNTS_PAYA BLE
127428	Check	792938	Voss Bros. Sales & Rental	6/22/2022	53.64	6/30/2022	RECONCILED		ACCOUNTS_PAYA BLE
127429	Check	793435	Houghton Mifflin Harcourt	6/22/2022	1,512.84	6/30/2022	RECONCILED		ACCOUNTS_PAYA BLE
127430	Check	794068	Roger E. Howard	6/22/2022	3,431.16	6/30/2022	RECONCILED		ACCOUNTS_PAYA BLE
127431	Check	794689	Brown Supply Co.	6/22/2022	65.76	6/30/2022	RECONCILED		ACCOUNTS_PAYA BLE
127432	Check	795054	Columbus Kenworth Inc.	6/22/2022	361.45	6/30/2022	RECONCILED		ACCOUNTS_PAYA BLE
127433	Check	795116	R & R Services Plus LLC	6/22/2022	350.00		VOID	6/22/2022	ACCOUNTS_PAYA BLE
127434	Check	795284	Stiles, Lisa	6/22/2022	131.27	6/30/2022	RECONCILED		ACCOUNTS_PAYA BLE
127435	Check	795386	Buskirk, Jeremy	6/22/2022	134.04	6/30/2022	RECONCILED		ACCOUNTS_PAYA BLE
127436	Check	795436	PM Graphics Inc.	6/22/2022	1,975.18	6/30/2022	RECONCILED		ACCOUNTS_PAYA BLE
127437	Check	795449	J & J Enterprises- Westerville	6/22/2022	170.00	6/30/2022	RECONCILED		ACCOUNTS_PAYA BLE
127438	Check	795596	Rucker, Joseph	6/22/2022	316.73	6/30/2022	RECONCILED		ACCOUNTS_PAYA BLE
127439	Check	795642	Bondurant, David & Mary	6/22/2022	1,615.65	6/30/2022	RECONCILED		ACCOUNTS_PAYA BLE
127440	Check	795685	US Bank National Association	6/22/2022	8,695.20	6/30/2022	RECONCILED		ACCOUNTS_PAYA BLE
127441	Check	795712	Hard Eight LLC	6/22/2022	1,955.00	6/30/2022	RECONCILED		ACCOUNTS_PAYA BLE
127442	Check	795853	The Brewer- Garrett Company	6/22/2022	9,139.00	6/30/2022	RECONCILED		ACCOUNTS_PAYA BLE

## Big Walnut Local Schools Disbursement Report-All-20220630

Check #	Check Type	Vendor #	Primary Name	Date	Amount	Reconcile Date	Status	Void Date	Type
127443	Check	991538	TP Mechanical Contractors, Inc.	6/22/2022	\$ 2,990.00	6/30/2022	RECONCILED		ACCOUNTS_PAYA BLE
127444	Check	991560	Generator Systems, LLC	6/22/2022	1,169.00	6/30/2022	RECONCILED		ACCOUNTS_PAYA BLE
127445	Check	991725	Right Way Food Service	6/22/2022	458.96	6/30/2022	RECONCILED		ACCOUNTS_PAYA BLE
127446	Check	991769	National Automotive Parts Association	6/22/2022	98.01	6/30/2022	RECONCILED		ACCOUNTS_PAYA BLE
127447	Check	991800	EI US, LLC.; dba LearnWell	6/22/2022	59.85		OUTSTANDING		ACCOUNTS_PAYA BLE
127448	Check	991812	McDonald, Judith A	6/22/2022	165.00	6/30/2022	RECONCILED		ACCOUNTS_PAYA BLE
127449	Check	991831	Brown, Darren	6/22/2022	1,077.10		OUTSTANDING		ACCOUNTS_PAYA BLE
127450	Check	991832	Bark, Samantha Elizabeth	6/22/2022	538.55	6/30/2022	RECONCILED		ACCOUNTS_PAYA BLE
127451	Check	1008	Rumpke of Ohio, Inc.	6/28/2022	3,751.58		OUTSTANDING		ACCOUNTS_PAYA BLE

**\$ 4,127,158.02**

**Grand Total**



**Page Intentionally Left Blank**



**BIG WALNUT** | **INSPIRE**  
**LOCAL SCHOOLS** | **& GUIDE**

---

---

COMPARISON OF FISCAL YEAR 2022 YTD  
APPROPRIATIONS WITH FISCAL YTD ACTUAL -  
ALL FUNDS (EXCLUDING GENERAL FUND)

AND

INVESTMENT REPORT FOR ALL FUNDS

---

---

Comparison of Fiscal Year 2022 YTD Appropriations with Fiscal Year YTD Actual Expenditures - All Funds

	BOE Approved Appropriation	Prior FY Encumbrance	FYTD Expendable	FYTD Expenditures	Current Encumbrances	Unencumbered Balance	Unencumbered Percent
002 - BOND RETIREMENT	9,470,115	-	9,470,115	9,459,680	-	10,435	0%
003 - PERMANENT IMPROVEMENT	1,737,202	572,290	2,309,492	1,401,193	824,611	83,688	4%
004 - BUILDING IMPROVEMENT	1,987,050	24,667,734	26,654,784	21,337,593	5,293,810	23,381	0%
006 - FOOD SERVICE	2,182,580	500	2,183,080	2,104,876	18,101	60,103	3%
014 - ROTARY-INTERNAL SERVICES	20,200	19,258	39,458	39,036	-	422	1%
018 - PUBLIC SCHOOL SUPPORT	56,245	10,037	66,282	59,605	5,043	1,635	2%
019 - OTHER GRANT	3,486	-	3,486	3,450	-	36	1%
022 - DISTRICT AGENCY	229,564	13,170	242,734	233,625	2,149	6,960	3%
070 - CAPITAL PROJECTS	44,000	-	44,000	10,940	30,984	2,076	5%
200 - STUDENT MANAGED ACTIVITY	96,233	4,214	100,447	70,087	26,166	4,193	4%
300 - DISTRICT MANAGED STUDENT ACTIVITY	324,911	4,378	329,289	305,814	6,036	17,439	5%
401 - AUXILIARY SERVICES	398,057	78,549	476,606	337,926	20,972	117,707	25%
451 - DATA COMMUNICATION FUND	12,600	-	12,600	12,600	-	-	0%
467 - STUDENT WELLNESS AND SUCCESS	144,045	150	144,195	141,170	-	3,025	2%
499 - MISCELLANEOUS STATE GRANT FUND	186,341	5,511	191,852	155,417	21,335	15,100	8%
507 - ESSER FUND	1,141,385	-	1,141,385	920,025	-	221,359	0%
516 - IDEA PART-B GRANT	740,787	10,695	751,482	714,711	36,770	-	0%
551 LIMITED ENGLISH PROFICIENCY	7,662	-	7,662	7,662	-	-	0%
572 - TITLE I	199,548	4,223	203,771	197,788	5,983	-	0%
584 - TITLE IV ACADEMIC ENRICHMENT	16,137	-	16,137	16,137	-	-	0%
587 - EARLY CHILDHOOD SPECIAL EDUCATION GRANT	39,981	218	40,199	40,199	-	-	0%
590 - TITLE II-A IMPROVING TEACHER QUALITY	42,627	-	42,627	28,845	13,782	-	0%
599 - MISCELLANEOUS FEDERAL GRANTS	(250)	-	(250)	(250)	-	-	100%
<b>TOTAL ALL FUNDS</b>	<b>19,080,505</b>	<b>25,390,927</b>	<b>44,471,432</b>	<b>37,598,130</b>	<b>6,305,742</b>	<b>567,559</b>	<b>1%</b>

**BIG WALNUT LOCAL SCHOOL DISTRICT  
INVESTMENT PORTFOLIO**

**June 30, 2022**

<u>Institution</u>	<u>Instrument Type</u>	<u>Cost Basis</u>	<u>Purchase Date</u>	<u>Yield Rate</u>	<u>Maturity Date</u>	<u>Days to Maturity</u>	<u>Est. Interest Remaining</u>
<b>INTERIM FUNDS - General Operating Funds</b>							
<i>Fifth Third Securities, Inc. - Investments</i>							
1) U.S. Treasury Note	U.S. Treasurer	\$809,937.50	12/15/2021	0.18%	9/30/2022	92	\$2,031.25
2) Goldman Sachs Bk USA	Certificate of Deposit	\$245,000.00	11/27/2019	1.80%	11/28/2022	151	\$2,223.12
3) U.S. Treasury Note	U.S. Treasurer	\$506,484.38	12/15/2021	0.31%	1/15/2023	199	\$3,177.08
4) U.S. Treasury Note	U.S. Treasurer	\$516,621.09	12/15/2021	0.46%	6/30/2023	365	\$659.18
5) U.S. Treasury Note	U.S. Treasurer	\$520,019.53	12/15/2021	0.65%	12/31/2023	549	\$3,671.88
6) U.S. Treasury Note	U.S. Treasurer	\$511,816.41	12/15/2021	0.81%	6/30/2024	731	\$7,652.99
7) U.S. Treasury Note	U.S. Treasurer	\$394,556.25	12/15/2021	0.88%	9/15/2024	808	\$9,193.75
<b>Fifth Third Investment Total Subtotal</b>		<b>\$3,504,435.16</b>					
<i>RedTree Investment Group - Investments</i>							
8) Toyota Motor Credit	Commercial Paper	\$1,196,220.00	12/16/2021	0.42%	9/12/2022	74	\$3,780.00
9) Toyota Motor Credit	Commercial Paper	\$199,325.00	12/20/2021	0.45%	9/16/2022	78	\$675.00
10) Bank of Montreal	Commercial Paper	\$246,970.56	6/23/2022	2.91%	11/22/2022	145	\$3,029.44
11) U.S. Treasury Bill	U.S. Treasury Bill	\$498,732.02	12/20/2021	0.25%	12/1/2022	154	\$1,267.98
12) Lorain County	Municipal Bond	\$175,000.00	12/30/2020	0.40%	12/1/2022	154	\$350.00
13) Canadian Imp Holding	Commercial Paper	\$246,501.81	6/21/2022	2.87%	12/16/2022	169	\$3,498.19
14) U.S. Treasury Note	U.S. Treasurer	\$598,359.38	12/15/2021	0.37%	1/31/2023	215	\$750.00
15) JP Morgan	Commercial Paper	\$244,019.10	6/21/2022	3.33%	3/13/2023	256	\$5,980.90
16) TD USA	Commercial Paper	\$243,970.00	6/27/2022	3.32%	3/22/2023	265	\$6,030.00
17) Royal Bank of Canada (RBC)	Commercial Paper	\$326,633.38	6/30/2022	3.42%	3/27/2023	270	\$8,366.62
18) U.S. Treasury Note	U.S. Treasurer	\$497,949.22	12/15/2021	0.44%	3/31/2023	274	\$625.00
19) U.S. Treasury Note	U.S. Treasurer	\$496,757.81	12/15/2021	0.61%	9/30/2023	457	\$1,875.00
20) U.S. Treasury Note	U.S. Treasurer	\$497,792.97	12/6/2021	0.61%	10/31/2023	488	\$2,812.50
21) Bethel Local School District	Municipal Bond	\$217,154.25	7/28/2020	1.11%	11/1/2023	489	\$7,845.75
22) U.S. Treasury Note	U.S. Treasurer	\$498,750.00	12/3/2021	0.63%	11/30/2023	518	\$3,750.00
23) City of Farview Park	Municipal Bond	\$165,000.00	7/1/2021	0.35%	12/1/2023	519	\$858.84
24) U.S. Treasury Note	U.S. Treasurer	\$249,658.20	6/30/2021	0.42%	4/15/2024	655	\$1,875.00
25) Federal Home Loan Bank	U.S. Gov't Agency Note	\$150,000.00	6/28/2021	0.40%	6/28/2024	729	\$780.00
26) Federal Home Loan Bank	U.S. Gov't Agency Note	\$260,000.00	8/26/2021	0.54%	8/26/2024	788	\$1,690.00
<b>Government Debt - Federal Agency Subtotal</b>		<b>\$7,008,793.70</b>					
<i>Cash Accounts</i>							
1) First Commonwealth Bank	Checking - SM	\$15,721.22	6/30/2022	0.03%	7/1/2022	1	\$0.01
2) Federated Govt Obligations Is	Money Market	\$78,476.47	6/30/2022	1.36%	7/1/2022	1	\$2.92
3) First American Obligations Fund	Money Market	\$11,876.73	6/30/2022	1.29%	7/1/2022	1	\$0.42
4) Star Ohio - General	Money Market	\$12,672,754.49	6/30/2022	1.15%	7/1/2022	1	\$399.28
<b>Cash Account Subtotal</b>		<b>\$12,778,828.91</b>					
<b>Total Interim Funds</b>		<b>\$23,292,057.77</b>					
<b>ACTIVE FUNDS - General Operating Funds</b>							
1) First Commonwealth Bank	Checking - General	\$4,552,763.12	6/30/2022	0.02%	7/1/2022	1	\$2.49
2) First Commonwealth Bank	Checking - Payroll	\$195,738.10	6/30/2022	0.00%	7/1/2022	1	\$0.00
<b>Total Active Funds</b>		<b>\$4,748,501.22</b>					84854.59017
<b>Total Active and Interim Funds - General Operating</b>		<b>\$28,040,558.99</b>		<b>0.85%</b>		<b>127</b>	<b>\$84,854.59</b>

**BIG WALNUT LOCAL SCHOOL DISTRICT  
CONSTRUCTION - INVESTMENT PORTFOLIO  
June 30, 2022**

<u>Institution</u>	<u>Instrument Type</u>	<u>Cost Basis</u>	<u>Purchase Date</u>	<u>Yield Rate</u>	<u>Maturity Date</u>	<u>Days to Maturity</u>	<u>Est. Earnings Remaining</u>
<b>May 2019 - Bond Proceeds</b>							
<i>Commercial Paper</i>							
1) National Bank of Canada	Commercial Paper	\$998,180.00	5/20/2022	1.17%	7/15/2022	15	\$1,820.00
2) National Bank of Canada	Commercial Paper	\$448,593.72	6/29/2022	1.95%	8/26/2022	57	\$1,406.28
3) TD USA	Commercial Paper	\$497,738.75	6/27/2022	2.02%	9/16/2022	78	\$2,261.25
4) ING US CP	Commercial Paper	\$825,363.30	6/29/2022	2.22%	9/28/2022	90	\$4,636.70
5) MUFG Bank	Commercial Paper	\$864,840.42	5/31/2022	1.76%	9/30/2022	92	\$5,159.58
6) Mizuho Securities	Commercial Paper	\$823,014.16	6/29/2022	2.55%	10/27/2022	119	\$6,985.84
7) JP Morgan	Commercial Paper	\$494,779.17	5/23/2022	2.12%	11/18/2022	141	\$5,220.83
<b>Commercial Paper Subtotal</b>		<u>\$4,952,509.52</u>					
8) First American Treasury Obligations Fund	Money Market	\$19,467.06	6/30/2022	1.29%	7/1/2022	1	\$0.69
9) Star Ohio - Construction Fund	Money Market	\$718,279.93	6/30/2022	1.15%	7/1/2022	1	\$22.63
<b>Subtotal</b>		<u>\$737,746.99</u>					
<b>Total May 2019 - Bond Proceeds</b>		<u>\$5,690,256.51</u>					
<b>Grand Total Construction Proceeds</b>		\$5,690,256.51		1.83%		71	\$27,513.80

**BIG WALNUT LOCAL SCHOOL DISTRICT  
INVESTMENT EARNINGS REVENUE  
June 30, 2022**

<b>Fund</b>	<b>Month to Date</b>	<b>Year to Date</b>
General Fund (001)	\$10,500.47	\$55,803.63
Building Project Fund (004-9017)	\$15,154.16	\$164,347.44
Food Service Fund (006)	(\$10.15)	\$285.10
Sunbury Meadows CDA (022-9200)	\$6.45	\$45.44
Auxillary Services Fund (401)	\$2.35	\$184.12
<b>Total All Funds</b>	<b>\$25,653.28</b>	<b>\$220,665.73</b>

**Thank you for your review of the June 2022 Big Walnut Local  
School District Financial Report.**



Big Walnut Local School District  
110 Tippett Court  
Sunbury, OH 43074